

HCN3 antibody - middle region

Rabbit Polyclonal Antibody

Catalog # AI10817

Product Information

Application	WB
Primary Accession	Q9P1Z3
Other Accession	NM_020897 , NP_065948
Reactivity	Human, Mouse, Rat, Rabbit, Pig, Dog, Horse, Bovine
Predicted	Human, Mouse, Rat, Rabbit, Dog, Bovine
Host	Rabbit
Clonality	Polyclonal
Calculated MW	86032

Additional Information

Gene ID	57657
Alias Symbol	KIAA1535, MGC131493
Other Names	Potassium/sodium hyperpolarization-activated cyclic nucleotide-gated channel 3, HCN3, KIAA1535
Format	Liquid. Purified antibody supplied in 1x PBS buffer with 0.09% (w/v) sodium azide and 2% sucrose.
Reconstitution & Storage	Add 50 ul of distilled water. Final anti-HCN3 antibody concentration is 1 mg/ml in PBS buffer with 2% sucrose. For longer periods of storage, store at 20°C. Avoid repeat freeze-thaw cycles.
Precautions	HCN3 antibody - middle region is for research use only and not for use in diagnostic or therapeutic procedures.

Protein Information

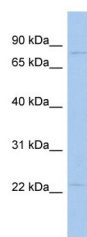
Name	HCN3
Synonyms	KIAA1535
Function	Hyperpolarization-activated ion channel that are permeable to sodium and potassium ions, with an about 3:1 preference for potassium ions (PubMed: 16043489). Contributes to the native pacemaker currents in heart (If) and in neurons (Ih). In particular, plays a pivotal role in maintaining excitability and promoting rhythmic burst firing within hypothalamic nuclei. Exerts a significant influence on the configuration of the cardiac action potential waveform. Does not appear to play a prominent role in the processing of acute, neuropathic, or inflammatory pain (By similarity).

Cellular Location	Cell membrane; Multi-pass membrane protein
Tissue Location	Detected in brain..

References

Gregory,S.G., (2006) Nature 441 (7091), 315-321 Reconstitution and Storage:For short term use, store at 2-8C up to 1 week. For long term storage, store at -20C in small aliquots to prevent freeze-thaw cycles.

Images



WB Suggested Anti-HCN3 Antibody Titration: 0.2-1 µg/ml
 ELISA Titer: 1:1562500
 Positive Control: COLO205 cell lysate

Please note: All products are 'FOR RESEARCH USE ONLY. NOT FOR USE IN DIAGNOSTIC OR THERAPEUTIC PROCEDURES'.