

# ACHB Antibody - N-terminal region

Rabbit Polyclonal Antibody

Catalog # AI10769

## Product Information

---

<b>Application</b>	WB
<b>Primary Accession</b>	<a href="#">P11230</a>
<b>Other Accession</b>	<a href="#">NP_000738</a>
<b>Reactivity</b>	Human
<b>Predicted</b>	Human, Rabbit, Pig, Bovine
<b>Host</b>	Rabbit
<b>Clonality</b>	Polyclonal
<b>Calculated MW</b>	56698

## Additional Information

---

<b>Gene ID</b>	1140
<b>Alias Symbol</b> <b>Other Names</b>	CHRNA1, ACHRB, CHRNB, Acetylcholine receptor subunit beta, CHRNA1, ACHRB, CHRNB
<b>Format</b>	Liquid. Purified antibody supplied in 1x PBS buffer with 0.09% (w/v) sodium azide and 2% sucrose.
<b>Reconstitution &amp; Storage</b>	Add 50 µl of distilled water. Final Anti-ACHB antibody concentration is 1 mg/ml in PBS buffer with 2% sucrose. For longer periods of storage, store at -20°C. Avoid repeat freeze-thaw cycles.
<b>Precautions</b>	ACHB Antibody - N-terminal region is for research use only and not for use in diagnostic or therapeutic procedures.

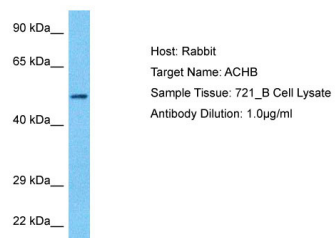
## Protein Information

---

<b>Name</b>	CHRNA1 ( <a href="#">HGNC:1961</a> )
<b>Synonyms</b>	ACHRB, CHRNB
<b>Function</b>	After binding acetylcholine, the AChR responds by an extensive change in conformation that affects all subunits and leads to opening of an ion-conducting channel across the plasma membrane.
<b>Cellular Location</b>	Postsynaptic cell membrane; Multi-pass membrane protein. Cell membrane; Multi-pass membrane protein

## Images

---



Host: Rabbit  
Target Name: ACHB  
Sample Tissue: 721\_B Whole Cell lysates  
Antibody Dilution: 1µg/ml

Please note: All products are 'FOR RESEARCH USE ONLY. NOT FOR USE IN DIAGNOSTIC OR THERAPEUTIC PROCEDURES'.