

# CACNB2 antibody - C-terminal region

Rabbit Polyclonal Antibody

Catalog # AI10765

## Product Information

---

<b>Application</b>	WB
<b>Primary Accession</b>	<a href="#">Q08289</a>
<b>Other Accession</b>	<a href="#">NM_000724</a> , <a href="#">NP_000715</a>
<b>Reactivity</b>	Human, Mouse, Rat, Rabbit, Dog, Horse, Bovine
<b>Predicted</b>	Human, Mouse, Rat, Dog, Bovine
<b>Host</b>	Rabbit
<b>Clonality</b>	Polyclonal
<b>Calculated MW</b>	73581

## Additional Information

---

<b>Gene ID</b>	783
<b>Alias Symbol</b>	CACNLB2, CAVB2, FLJ23743, MYSB
<b>Other Names</b>	Voltage-dependent L-type calcium channel subunit beta-2, CAB2, Calcium channel voltage-dependent subunit beta 2, Lambert-Eaton myasthenic syndrome antigen B, MYSB, CACNB2, CACNLB2, MYSB
<b>Format</b>	Liquid. Purified antibody supplied in 1x PBS buffer with 0.09% (w/v) sodium azide and 2% sucrose.
<b>Reconstitution &amp; Storage</b>	Add 50 ul of distilled water. Final anti-CACNB2 antibody concentration is 1 mg/ml in PBS buffer with 2% sucrose. For longer periods of storage, store at 20°C. Avoid repeat freeze-thaw cycles.
<b>Precautions</b>	CACNB2 antibody - C-terminal region is for research use only and not for use in diagnostic or therapeutic procedures.

## Protein Information

---

<b>Name</b>	CACNB2
<b>Synonyms</b>	CACNLB2, MYSB
<b>Function</b>	Beta subunit of voltage-dependent calcium channels which contributes to the function of the calcium channel by increasing peak calcium current (By similarity). Plays a role in shifting voltage dependencies of activation and inactivation of the channel (By similarity). May modulate G protein inhibition (By similarity). May contribute to beta-adrenergic augmentation of Ca(2+) influx in cardiomyocytes, thereby regulating increases in heart rate and contractile force (PubMed: <a href="#">36424916</a> ). Involved in membrane targeting of the

alpha-1 subunit CACNA1C (PubMed:[17525370](#)).

**Cellular Location**

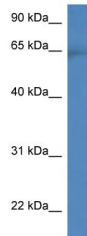
Cell membrane, sarcolemma; Peripheral membrane protein; Cytoplasmic side

**Tissue Location**

Expressed in all tissues.

## Images

---



WB Suggested Anti-CACNB2 Antibody Titration: 0.2-1  
µg/ml  
ELISA Titer: 1:12500  
Positive Control: HepG2 cell lysate

Please note: All products are 'FOR RESEARCH USE ONLY. NOT FOR USE IN DIAGNOSTIC OR THERAPEUTIC PROCEDURES'.