

Crem Antibody - C-terminal region

Rabbit Polyclonal Antibody

Catalog # AI10729

Product Information

Application	WB
Primary Accession	Q03061
Other Accession	NM_001110860 , NP_001104330
Reactivity	Human, Mouse, Rat, Rabbit, Zebrafish, Pig, Dog, Horse, Bovine, Sheep
Predicted	Human, Mouse, Rat, Rabbit, Zebrafish, Pig, Dog, Horse, Bovine, Sheep
Host	Rabbit
Clonality	Polyclonal
Calculated MW	38497

Additional Information

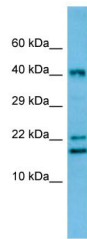
Gene ID	25620
Alias Symbol	Icer
Other Names	cAMP-responsive element modulator, Crem
Format	Liquid. Purified antibody supplied in 1x PBS buffer with 0.09% (w/v) sodium azide and 2% sucrose.
Reconstitution & Storage	Add 50 ul of distilled water. Final anti-Crem antibody concentration is 1 mg/ml in PBS buffer with 2% sucrose. For longer periods of storage, store at 20°C. Avoid repeat freeze-thaw cycles.
Precautions	Crem Antibody - C-terminal region is for research use only and not for use in diagnostic or therapeutic procedures.

Protein Information

Name	Crem
Function	Transcriptional regulator that binds the cAMP response element (CRE), a sequence present in many viral and cellular promoters. Isoforms are either transcriptional activators or repressors. Isoform Delta is an activator. Plays a role in spermatogenesis and is involved in spermatid maturation. Binding of isoform Tau (activator) to CRE is increased by CREB3L4. The CREM isoform Tau-CREB3L4 heterodimer functions through CRE and may recruit HIRA to CRE to regulate histone exchange (By similarity).
Cellular Location	Nucleus.
Tissue Location	Isoform Tau is expressed in testis germ cells. CREM-theta1- and

CREM-theta2-containing isoforms are expressed in testis.

Images



WB Suggested Anti-Crem Antibody Titration: 1.0 µg/ml
Positive Control: Rat Thymus

Please note: All products are 'FOR RESEARCH USE ONLY. NOT FOR USE IN DIAGNOSTIC OR THERAPEUTIC PROCEDURES'.