

Wdr45l antibody - N-terminal region

Rabbit Polyclonal Antibody

Catalog # AI10693

Product Information

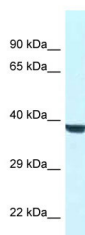
Application	WB
Primary Accession	Q2MCP5
Other Accession	NM_001039587 , NP_001034676
Reactivity	Human, Mouse, Rat, Rabbit, Zebrafish, Pig, Dog, Horse, Bovine
Predicted	Human, Mouse, Rat, Rabbit, Zebrafish, Pig, Horse, Bovine
Host	Rabbit
Clonality	Polyclonal
Calculated MW	37 kDa

Additional Information

Alias Symbol	RGD1305141, WIPI-3, Wdr45l
Format	Liquid. Purified antibody supplied in 1x PBS buffer with 0.09% (w/v) sodium azide and 2% sucrose.
Reconstitution & Storage	Add 50 ul of distilled water. Final anti-Wdr45l antibody concentration is 1 mg/ml in PBS buffer with 2% sucrose. For longer periods of storage, store at 20°C. Avoid repeat freeze-thaw cycles.
Precautions	Wdr45l antibody - N-terminal region is for research use only and not for use in diagnostic or therapeutic procedures.

Protein Information

Images



WB Suggested Anti-Wdr45l Antibody Titration: 1.0 µg/ml
Positive Control: Rat Liver