

RBPJL antibody - N-terminal region

Rabbit Polyclonal Antibody

Catalog # AI10670

Product Information

Application	WB
Primary Accession	Q5QPV0
Other Accession	NM_014276 , NP_055091
Reactivity	Human, Mouse, Rat, Dog, Horse, Bovine
Predicted	Human, Mouse, Rat, Pig, Bovine
Host	Rabbit
Clonality	Polyclonal
Calculated MW	57 KDa

Additional Information

Alias Symbol	SUH, SUHL, RBP-L, RBPSUHL
Format	Liquid. Purified antibody supplied in 1x PBS buffer with 0.09% (w/v) sodium azide and 2% sucrose.
Reconstitution & Storage	Add 100 ul of distilled water. Final anti-RBPJL antibody concentration is 1 mg/ml in PBS buffer with 2% sucrose. For longer periods of storage, store at 20°C. Avoid repeat freeze-thaw cycles.
Precautions	RBPJL antibody - N-terminal region is for research use only and not for use in diagnostic or therapeutic procedures.

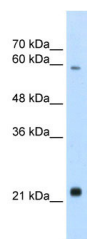
Protein Information

References

Beres,T.M., (2006) Mol. Cell. Biol. 26 (1), 117-130 Reconstitution and Storage:For short term use, store at 2-8C up to 1 week. For long term storage, store at -20C in small aliquots to prevent freeze-thaw cycles.

Images

WB Suggested Anti-RBPJL Antibody Titration: 2.5µg/ml
Positive Control: Jurkat cell lysate



Please note: All products are 'FOR RESEARCH USE ONLY. NOT FOR USE IN DIAGNOSTIC OR THERAPEUTIC PROCEDURES'.