

Ppara antibody - C-terminal region

Rabbit Polyclonal Antibody

Catalog # AI10602

Product Information

Application	WB
Primary Accession	P37230
Other Accession	NM_013196 , NP_037328
Reactivity	Human, Mouse, Rat, Zebrafish, Pig, Dog, Bovine
Predicted	Human, Mouse, Rat, Zebrafish, Pig, Chicken, Dog, Bovine
Host	Rabbit
Clonality	Polyclonal
Calculated MW	52377

Additional Information

Gene ID	25747
Alias Symbol	PPAR
Other Names	Peroxisome proliferator-activated receptor alpha, PPAR-alpha, Nuclear receptor subfamily 1 group C member 1, Ppara, Nr1c1, Ppar
Format	Liquid. Purified antibody supplied in 1x PBS buffer with 0.09% (w/v) sodium azide and 2% sucrose.
Reconstitution & Storage	Add 50 ul of distilled water. Final anti-Ppara antibody concentration is 1 mg/ml in PBS buffer with 2% sucrose. For longer periods of storage, store at 20°C. Avoid repeat freeze-thaw cycles.
Precautions	Ppara antibody - C-terminal region is for research use only and not for use in diagnostic or therapeutic procedures.

Protein Information

Name	Ppara
Synonyms	Nr1c1, Ppar
Function	Ligand-activated transcription factor. Key regulator of lipid metabolism. Activated by the endogenous ligand 1-palmitoyl-2-oleoyl-sn-glycerol-3-phosphocholine (16:0/18:1-GPC). Activated by oleylethanolamide, a naturally occurring lipid that regulates satiety. Receptor for peroxisome proliferators such as hypolipidemic drugs and fatty acids. Regulates the peroxisomal beta-oxidation pathway of fatty acids. Functions as a transcription activator for the ACOX1 and P450 genes. Transactivation activity requires heterodimerization with RXRA and is antagonized by NR2C2. May be

required for the propagation of clock information to metabolic pathways regulated by PER2 (By similarity).

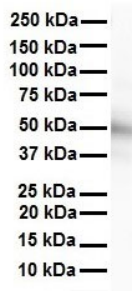
Cellular Location

Nucleus.

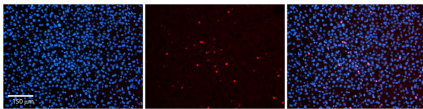
Tissue Location

Expressed predominantly in liver and kidney.

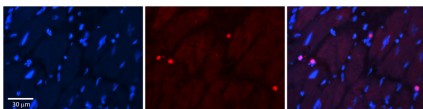
Images



WB Suggested Anti-Ppara antibody Titration: 1 ug/mL
Sample Type: Human heart



Rabbit Anti-Ppara Antibody
Catalog Number: AI162
Formalin Fixed Paraffin Embedded Tissue: Human Adult liver
Observed Staining: Nuclear and some weak cytoplasmic
Primary Antibody Concentration: 1:6
Secondary Antibody: Donkey anti-Rabbit-Cy2/3
Secondary Antibody Concentration: 1:2
Magnification: 2X
Exposure Time: .5 – 2. sec
Protocol located in Reviews and Data.



Rabbit Anti-Ppara Antibody
Catalog Number: AI162
Formalin Fixed Paraffin Embedded Tissue: Human Adult heart
Observed Staining: Nuclear
Primary Antibody Concentration: 1:6
Secondary Antibody: Donkey anti-Rabbit-Cy2/3
Secondary Antibody Concentration: 1:2
Magnification: 2X
Exposure Time: .5 – 2. sec
Protocol located in Reviews and Data.

Please note: All products are 'FOR RESEARCH USE ONLY. NOT FOR USE IN DIAGNOSTIC OR THERAPEUTIC PROCEDURES'.