

Pthlh antibody - middle region

Rabbit Polyclonal Antibody

Catalog # AI10577

Product Information

Application	WB, IHC
Primary Accession	P22858
Other Accession	NM_008970 , NP_032996
Reactivity	Human, Mouse, Rat, Dog, Bovine
Predicted	Human, Mouse, Pig, Chicken
Host	Rabbit
Clonality	Polyclonal
Calculated MW	20100

Additional Information

Alias Symbol	PTH-like, Pthrp
Other Names	Parathyroid hormone-related protein, PTH-rP, PTHrP, Parathyroid hormone-like protein, PLP, Osteostatin, Pthlh, Pthrp
Format	Liquid. Purified antibody supplied in 1x PBS buffer with 0.09% (w/v) sodium azide and 2% sucrose.
Reconstitution & Storage	Add 50 ul of distilled water. Final anti-Pthlh antibody concentration is 1 mg/ml in PBS buffer with 2% sucrose. For longer periods of storage, store at 20°C. Avoid repeat freeze-thaw cycles.
Precautions	Pthlh antibody - middle region is for research use only and not for use in diagnostic or therapeutic procedures.

Protein Information

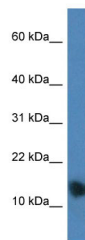
Name	Pthlh
Synonyms	Pthrp {ECO:0000303 PubMed:17301089}
Function	Neuroendocrine peptide which is a critical regulator of cellular and organ growth, development, migration, differentiation and survival and of epithelial calcium ion transport (PubMed: 8314082 , PubMed: 8895385). Acts by binding to its receptor, PTH1R, activating G protein-coupled receptor signaling (By similarity). Regulates endochondral bone development and epithelial-mesenchymal interactions during the formation of the mammary glands and teeth (PubMed: 20501677 , PubMed: 8314082 , PubMed: 8895385). Required for skeletal homeostasis. Promotes mammary mesenchyme differentiation and bud outgrowth by modulating mesenchymal cell responsiveness to BMPs (By similarity). Up- regulates BMPR1A expression in

the mammary mesenchyme and this increases the sensitivity of these cells to BMPs and allows them to respond to BMP4 in a paracrine and/or autocrine fashion (PubMed:[17301089](#)). BMP4 signaling in the mesenchyme, in turn, triggers epithelial outgrowth and augments MSX2 expression, which causes the mammary mesenchyme to inhibit hair follicle formation within the nipple sheath (PubMed:[17301089](#)).

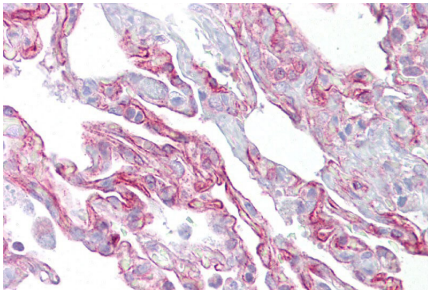
Cellular Location

Secreted {ECO:0000250|UniProtKB:P12272}. Cytoplasm {ECO:0000250|UniProtKB:P12272}. Nucleus {ECO:0000250|UniProtKB:P12272}

Images



WB Suggested Anti-Pthlh Antibody Titration: 1 ug/ml
Positive Control: Mouse Brain lysate



Immunohistochemistry with Lung tissue at an antibody concentration of 5ug/ml using anti-Pthlh antibody (AI1577)

Please note: All products are 'FOR RESEARCH USE ONLY. NOT FOR USE IN DIAGNOSTIC OR THERAPEUTIC PROCEDURES'.