

NT5C3 antibody - middle region

Rabbit Polyclonal Antibody

Catalog # AI10318

Product Information

Application	WB
Primary Accession	Q9H0P0-1
Other Accession	NM_016489 , NP_057573
Reactivity	Human, Mouse, Rat, Zebrafish, Dog, Bovine
Predicted	Rat, Zebrafish, Dog, Bovine
Host	Rabbit
Clonality	Polyclonal
Calculated MW	34 KDa

Additional Information

Alias Symbol	MGC27337, MGC87109, MGC87828, P5'N-1, PN-I, PSN1, UMPH, UMPH1, cN-III, NT5C3
Format	Liquid. Purified antibody supplied in 1x PBS buffer with 0.09% (w/v) sodium azide and 2% sucrose.
Reconstitution & Storage	Add 50 ul of distilled water. Final anti-NT5C3 antibody concentration is 1 mg/ml in PBS buffer with 2% sucrose. For longer periods of storage, store at 20°C. Avoid repeat freeze-thaw cycles.
Precautions	NT5C3 antibody - middle region is for research use only and not for use in diagnostic or therapeutic procedures.

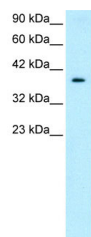
Protein Information

References

Amici,A., et al., (2002) Genomics Meth. Enzymol. 354,149-159
Reconstitution and Storage:For short term use, store at 2-8C up to 1 week. For long term storage, store at -20C in small aliquots to prevent freeze-thaw cycles.

Images

WB Suggested Anti-NT5C3 Antibody Titration: .2-1 ug/ml
Positive Control: HepG2 cell lysate



Please note: All products are 'FOR RESEARCH USE ONLY. NOT FOR USE IN DIAGNOSTIC OR THERAPEUTIC PROCEDURES'.