

CBX8 antibody - N-terminal region

Rabbit Polyclonal Antibody

Catalog # AI10139

Product Information

Application	WB
Primary Accession	Q9HC52
Other Accession	Q9HC52 , NP_065700 , NM_020649
Reactivity	Human, Mouse, Rat, Rabbit, Zebrafish, Pig, Dog, Guinea Pig, Horse, Bovine, Yeast
Predicted Host	Human, Mouse, Rat, Rabbit, Zebrafish, Pig, Chicken, Dog, Bovine
Clonality	Rabbit
Calculated MW	Polyclonal 43396

Additional Information

Gene ID	57332
Alias Symbol	HPC3, PC3, RC1
Other Names	Chromobox protein homolog 8, Polycomb 3 homolog, Pc3, hPc3, Rectachrome 1, CBX8, PC3, RC1
Target/Specificity	CBX8 is one of the proteins homolog to the Polycomb group (PcG) proteins. They assemble to form large multiprotein complexes involved in gene silencing. Evidence suggests that PcG complexes are heterogeneous with respect to both protein composition and specific function.
Format	Liquid. Purified antibody supplied in 1x PBS buffer with 0.09% (w/v) sodium azide and 2% sucrose.
Reconstitution & Storage	Add 50 ul of distilled water. Final anti-CBX8 antibody concentration is 1 mg/ml in PBS buffer with 2% sucrose. For longer periods of storage, store at -20°C. Avoid repeat freeze-thaw cycles.
Precautions	CBX8 antibody - N-terminal region is for research use only and not for use in diagnostic or therapeutic procedures.

Protein Information

Name	CBX8
Synonyms	PC3, RC1
Function	Component of a Polycomb group (PcG) multiprotein PRC1-like complex, a complex class required to maintain the transcriptionally repressive state of

many genes, including Hox genes, throughout development. PcG PRC1 complex acts via chromatin remodeling and modification of histones; it mediates monoubiquitination of histone H2A 'Lys-119', rendering chromatin heritably changed in its expressibility.

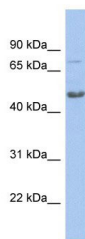
Cellular Location

Nucleus.

Background

This is a rabbit polyclonal antibody against CBX8. It was validated on Western Blot using a cell lysate as a positive control. Abgent strives to provide antibodies covering each member of a whole protein family of your interest. We also use our best efforts to provide you antibodies recognize various epitopes of a target protein. For availability of antibody needed for your experiment, please inquire (sales@abgent.com).

Images



CBX8 antibody - N-terminal region (AI10139) in Human COLO205 cells using Western Blot
WB Suggested Anti-CBX8 Antibody Titration: 0.2-1 µg/ml
ELISA Titer: 1:12500
Positive Control: COLO205 cell lysate

Please note: All products are 'FOR RESEARCH USE ONLY. NOT FOR USE IN DIAGNOSTIC OR THERAPEUTIC PROCEDURES'.