

ZFR antibody - middle region

Rabbit Polyclonal Antibody

Catalog # AI10134

Product Information

Application	WB, IHC
Primary Accession	Q96KR1
Other Accession	Q96KR1 , NP_057191 , NM_016107
Reactivity	Human, Mouse, Rat, Rabbit, Zebrafish, Dog, Horse, Bovine
Predicted	Human, Mouse, Rat, Rabbit, Zebrafish, Dog, Horse, Bovine
Host	Rabbit
Clonality	Polyclonal
Calculated MW	117012

Additional Information

Gene ID	51663
Alias Symbol	FLJ41312, ZFR1
Other Names	Zinc finger RNA-binding protein, hZFR, M-phase phosphoprotein homolog, ZFR
Target/Specificity	ZFR is critical for Staufen 2 isoform specific nucleocytoplasmic shuttling in neurons.
Format	Liquid. Purified antibody supplied in 1x PBS buffer with 0.09% (w/v) sodium azide and 2% sucrose.
Reconstitution & Storage	Add 50 ul of distilled water. Final anti-ZFR antibody concentration is 1 mg/ml in PBS buffer with 2% sucrose. For longer periods of storage, store at -20°C. Avoid repeat freeze-thaw cycles.
Precautions	ZFR antibody - middle region is for research use only and not for use in diagnostic or therapeutic procedures.

Protein Information

Name	ZFR
Function	Involved in postimplantation and gastrulation stages of development. Involved in the nucleocytoplasmic shuttling of STAU2. Binds to DNA and RNA (By similarity).
Cellular Location	Nucleus. Cytoplasm. Cytoplasmic granule. Chromosome Note=Associated with chromosome foci in meiotic cells. Localizes in somatodendritic compartment of primary hippocampal neurons. Colocalizes with STAU2 in

several cytosolic RNA granules (By similarity)

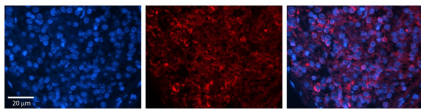
Tissue Location

Expressed in lung, liver, lymphocytes, heart, pancreas, placenta, brain and kidney.

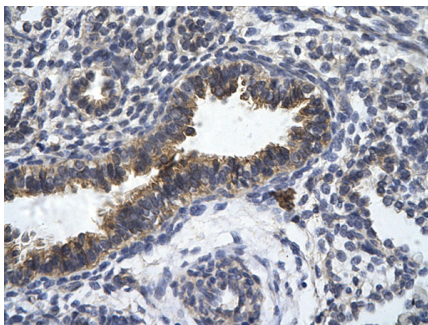
Background

This is a rabbit polyclonal antibody against ZFR. It was validated on Western Blot using a cell lysate as a positive control. Abgent strives to provide antibodies covering each member of a whole protein family of your interest. We also use our best efforts to provide you antibodies recognize various epitopes of a target protein. For availability of antibody needed for your experiment, please inquire (sales@abgent.com).

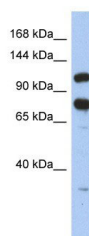
Images



Rabbit Anti-ZFR Antibody (AI10134) in Human Pineal Tissue using Immunohistochemistry
Rabbit Anti-ZFR Antibody
Catalog Number: AI10134
Formalin Fixed Paraffin Embedded Tissue: Human Pineal Tissue
Observed Staining: Cytoplasmic and nuclear in pinealocytes & interstitial cells
Primary Antibody
Concentration: 1:100 Other Working Concentrations: 1/600
Secondary Antibody: Donkey anti-Rabbit-Cy3
Secondary Antibody
Concentration: 1:200
Magnification: 20X
Exposure Time: 0.5 - 2.0 sec



Human Lung
Rabbit Anti-ZFR Antibody
Paraffin Embedded Tissue: Human bronchiole epithelium
Cellular Data: Epithelial cells of renal tubule
Antibody Concentration: 4.0-8.0 µg/ml
Magnification: 400X



ZFR antibody - middle region (AI10134) in Human HT1080 cells using Western Blot
WB Suggested Anti-ZFR Antibody Titration: 0.2-1 µg/ml
ELISA Titer: 1:62500
Positive Control: HT1080 cell lysate
ZFR is strongly supported by BioGPS gene expression data to be expressed in Human HT1080 cells

Please note: All products are 'FOR RESEARCH USE ONLY. NOT FOR USE IN DIAGNOSTIC OR THERAPEUTIC PROCEDURES'.