

# WNT8B antibody - middle region

Rabbit Polyclonal Antibody

Catalog # AI10091

## Product Information

---

Application	WB
Primary Accession	<a href="#">Q93098</a>
Other Accession	<a href="#">Q93098</a> , <a href="#">NP_003384</a> , <a href="#">NM_003393</a>
Reactivity	Human, Mouse, Rat, Rabbit, Zebrafish, Pig, Dog, Guinea Pig, Horse, Bovine
Predicted	Human, Mouse, Rat, Rabbit, Zebrafish, Pig, Chicken, Dog, Guinea Pig, Horse
Host	Rabbit
Clonality	Polyclonal
Calculated MW	38721

## Additional Information

---

Gene ID	7479
Other Names	Protein Wnt-8b, WNT8B
Target/Specificity	<p>The WNT family consists of several secreted signaling proteins. These proteins have been implicated in oncogenesis and in several developmental processes, including regulation of cell fate and patterning during embryogenesis. WNT8B is a protein which shows 95%, 86% and 71% amino acid identity to the mouse, zebrafish and Xenopus Wnt8B proteins, respectively. The expression patterns of the human and mouse genes appear identical and are restricted to the developing brain. The chromosomal location of this gene to 10q24 suggests it as a candidate gene for partial epilepsy. The WNT gene family consists of structurally related genes which encode secreted signaling proteins. These proteins have been implicated in oncogenesis and in several developmental processes, including regulation of cell fate and patterning during embryogenesis. This gene is a member of the WNT gene family. It encodes a protein which shows 95%, 86% and 71% amino acid identity to the mouse, zebrafish and Xenopus Wnt8B proteins, respectively. The expression patterns of the human and mouse genes appear identical and are restricted to the developing brain. The chromosomal location of this gene to 10q24 suggests it as a candidate gene for partial epilepsy.</p>
Format	Liquid. Purified antibody supplied in 1x PBS buffer with 0.09% (w/v) sodium azide and 2% sucrose.
Reconstitution & Storage	Add 100 ul of distilled water. Final anti-WNT8B antibody concentration is 1 mg/ml in PBS buffer with 2% sucrose. For longer periods of storage, store at -20°C. Avoid repeat freeze-thaw cycles.
Precautions	WNT8B antibody - middle region is for research use only and not for use in diagnostic or therapeutic procedures.

## Protein Information

---

<b>Name</b>	WNT8B
<b>Function</b>	Ligand for members of the frizzled family of seven transmembrane receptors. May play an important role in the development and differentiation of certain forebrain structures, notably the hippocampus.
<b>Cellular Location</b>	Secreted, extracellular space, extracellular matrix
<b>Tissue Location</b>	Expression is restricted to the brain, and more specifically to the forebrain.

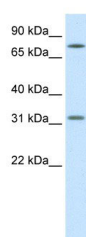
## Background

---

This is a rabbit polyclonal antibody against WNT8B. It was validated on Western Blot using a cell lysate as a positive control. Abgent strives to provide antibodies covering each member of a whole protein family of your interest. We also use our best efforts to provide you antibodies recognize various epitopes of a target protein. For availability of antibody needed for your experiment, please inquire (sales@abgent.com).

## Images

---



WNT8B antibody - middle region (AI10091) in Human  
Brain cells using Western Blot  
WB Suggested Anti-WNT8B Antibody Titration: 1.25 µg/ml  
ELISA Titer: 1:1562500  
Positive Control: Human brain

Please note: All products are 'FOR RESEARCH USE ONLY. NOT FOR USE IN DIAGNOSTIC OR THERAPEUTIC PROCEDURES'.