

# TLE4 antibody - N-terminal region

Rabbit Polyclonal Antibody

Catalog # AI10056

## Product Information

---

<b>Application</b>	WB, IHC
<b>Primary Accession</b>	<a href="#">Q04727</a>
<b>Other Accession</b>	<a href="#">Q04727</a> , <a href="#">NP_008936</a> , <a href="#">NM_007005</a>
<b>Reactivity</b>	Human, Mouse, Rat, Rabbit, Pig, Dog, Guinea Pig, Horse, Bovine
<b>Predicted</b>	Human, Mouse, Rat, Rabbit, Pig, Chicken, Dog, Guinea Pig, Horse, Bovine
<b>Host</b>	Rabbit
<b>Clonality</b>	Polyclonal
<b>Calculated MW</b>	83755

## Additional Information

---

<b>Gene ID</b>	7091
<b>Alias Symbol</b>	BCE-1, E(sp1), ESG, ESG4, GRG4, BCE1
<b>Other Names</b>	Transducin-like enhancer protein 4, Grg-4, Groucho-related protein 4, TLE4, GRG4, KIAA1261
<b>Target/Specificity</b>	TLE4 is the transcriptional corepressor that binds to a number of transcription factors. It inhibits the transcriptional activation mediated by PAX5, and by CTNNB1 and TCF family members in Wnt signaling. The effects of full-length TLE family members may be modulated by association with dominant-negative AES.
<b>Format</b>	Liquid. Purified antibody supplied in 1x PBS buffer with 0.09% (w/v) sodium azide and 2% sucrose.
<b>Reconstitution &amp; Storage</b>	Add 50 ul of distilled water. Final anti-TLE4 antibody concentration is 1 mg/ml in PBS buffer with 2% sucrose. For longer periods of storage, store at -20°C. Avoid repeat freeze-thaw cycles.
<b>Precautions</b>	TLE4 antibody - N-terminal region is for research use only and not for use in diagnostic or therapeutic procedures.

## Protein Information

---

<b>Name</b>	TLE4
<b>Synonyms</b>	GRG4, KIAA1261
<b>Function</b>	Transcriptional corepressor that binds to a number of transcription factors. Inhibits the transcriptional activation mediated by PAX5, and by CTNNB1 and

TCF family members in Wnt signaling. The effects of full-length TLE family members may be modulated by association with dominant-negative AES. Essential for the transcriptional repressor activity of SIX3 during retina and lens development and for SIX3 transcriptional auto-repression (By similarity). Involved in transcriptional repression of GNRHR and enhances MSX1-mediated transcriptional repression of CGA/alpha-GSU (By similarity).

**Cellular Location**

Nucleus.

**Tissue Location**

In all tissues examined, mostly in brain, and muscle

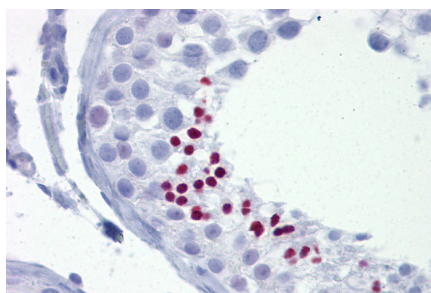
## Background

---

This is a rabbit polyclonal antibody against TLE4. It was validated on Western Blot using a cell lysate as a positive control. Abgent strives to provide antibodies covering each member of a whole protein family of your interest. We also use our best efforts to provide you antibodies recognize various epitopes of a target protein. For availability of antibody needed for your experiment, please inquire ([sales@abgent.com](mailto:sales@abgent.com)).

## Images

---



TLE4 antibody - N-terminal region (AI10056) in Human Testis cells using Immunohistochemistry  
Testis



TLE4 antibody - N-terminal region (AI10056) in Human THP-1 cells using Western Blot  
WB Suggested Anti-TLE4 Antibody Titration: 0.2-1 µg/ml  
ELISA Titer: 1:62500  
Positive Control: THP-1 cell lysate

Please note: All products are 'FOR RESEARCH USE ONLY. NOT FOR USE IN DIAGNOSTIC OR THERAPEUTIC PROCEDURES'.