

TLE3 antibody - N-terminal region

Rabbit Polyclonal Antibody
Catalog # AI10053

Product Information

Application	WB
Primary Accession	Q04726
Other Accession	Q04726 , NP_005069 , NM_005078
Reactivity	Human, Mouse, Rat, Rabbit, Zebrafish, Pig, Dog, Guinea Pig, Horse, Bovine
Predicted	Human, Mouse, Rat, Rabbit, Chicken, Guinea Pig, Horse, Bovine
Host	Rabbit
Clonality	Polyclonal
Calculated MW	83417

Additional Information

Gene ID	7090
Alias Symbol	ESG, ESG3, GRG3, HsT18976
Other Names	Transducin-like enhancer protein 3, Enhancer of split groucho-like protein 3, ESG3, TLE3, KIAA1547
Target/Specificity	The TLE genes are differentially expressed and encode nuclear proteins, consistent with the presence of sequence motifs associated with nuclear functions. These genes are the human homologues of <i>Drosophila</i> groucho, a member of the Notch signaling pathway which controls a number of different cell-fate choices in invertebrates and vertebrates.
Format	Liquid. Purified antibody supplied in 1x PBS buffer with 0.09% (w/v) sodium azide and 2% sucrose.
Reconstitution & Storage	Add 100 ul of distilled water. Final anti-TLE3 antibody concentration is 1 mg/ml in PBS buffer with 2% sucrose. For longer periods of storage, store at -20°C. Avoid repeat freeze-thaw cycles.
Precautions	TLE3 antibody - N-terminal region is for research use only and not for use in diagnostic or therapeutic procedures.

Protein Information

Name	TLE3 {ECO:0000303 PubMed:28689657, ECO:0000312 HGNC:HGNC:11839}
Function	Transcriptional coregulator that binds to a number of transcription factors. Acts as a regulator of adipogenesis both by acting as a corepressor of Wnt signaling and coactivator for PPARG (PubMed: 28689657). Inhibits the transcriptional activation mediated by CTNNB1 and TCF family members in

Wnt signaling (PubMed:[28689657](#)). Promotes differentiation of white adipocytes by acting as a coactivator for PPARG and preventing the association between PRDM16 and PPARG, thereby preventing browning of white adipocytes (By similarity).

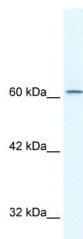
Cellular Location Nucleus. Chromosome {ECO:0000250|UniProtKB:Q08122}. Note=Localizes to chromatin {ECO:0000250|UniProtKB:Q08122}

Tissue Location Placenta and lung..

Background

This is a rabbit polyclonal antibody against TLE3. It was validated on Western Blot using a cell lysate as a positive control. Abgent strives to provide antibodies covering each member of a whole protein family of your interest. We also use our best efforts to provide you antibodies recognize various epitopes of a target protein. For availability of antibody needed for your experiment, please inquire (sales@abgent.com).

Images



TLE3 antibody - N-terminal region (AI10053) in Human HepG2 cells using Western Blot
WB Suggested Anti-TLE3 Antibody Titration: 2.5 µg/ml
Positive Control: HepG2 cell lysate

Please note: All products are 'FOR RESEARCH USE ONLY. NOT FOR USE IN DIAGNOSTIC OR THERAPEUTIC PROCEDURES'.