

MYEF2 antibody - N-terminal region

Rabbit Polyclonal Antibody

Catalog # AI10041

Product Information

Application	WB
Primary Accession	Q9P2K5
Other Accession	Q9P2K5 , NP_057216 , NM_016132
Reactivity	Human, Mouse, Rat, Rabbit, Dog, Guinea Pig, Horse, Bovine
Predicted	Human, Mouse, Rat, Rabbit, Pig, Dog, Guinea Pig, Horse, Bovine
Host	Rabbit
Clonality	Polyclonal
Calculated MW	64122

Additional Information

Gene ID	50804
Alias Symbol Other Names	FLJ11213, HsT18564, KIAA1341, MEF-2, MGC87325, MST156, MSTP156 Myelin expression factor 2, MEF-2, MyEF-2, MST156, MYEF2, KIAA1341
Target/Specificity	MYEF2 is the transcriptional repressor of the myelin basic protein gene (MBP). MYEF2 binds to the proximal MB1 element 5'-TTGTCC-3' of the MBP promoter. Its binding to MB1 and function are inhibited by PURA.
Format	Liquid. Purified antibody supplied in 1x PBS buffer with 0.09% (w/v) sodium azide and 2% sucrose.
Reconstitution & Storage	Add 50 ul of distilled water. Final anti-MYEF2 antibody concentration is 1 mg/ml in PBS buffer with 2% sucrose. For longer periods of storage, store at -20°C. Avoid repeat freeze-thaw cycles.
Precautions	MYEF2 antibody - N-terminal region is for research use only and not for use in diagnostic or therapeutic procedures.

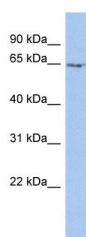
Protein Information

Name	MYEF2
Synonyms	KIAA1341
Function	Transcriptional repressor of the myelin basic protein gene (MBP). Binds to the proximal MB1 element 5'-TTGTCC-3' of the MBP promoter. Its binding to MB1 and function are inhibited by PURA (By similarity).
Cellular Location	Nucleus.

Background

This is a rabbit polyclonal antibody against MYEF2. It was validated on Western Blot using a cell lysate as a positive control. Abgent strives to provide antibodies covering each member of a whole protein family of your interest. We also use our best efforts to provide you antibodies recognize various epitopes of a target protein. For availability of antibody needed for your experiment, please inquire (sales@abgent.com).

Images



MYEF2 antibody - N-terminal region (AI10041) in Human PANC1 cells using Western Blot

WB Suggested Anti-MYEF2 Antibody Titration: 0.2-1 µg/ml

ELISA Titer: 1:12500

Positive Control: PANC1 cell lysate

Please note: All products are 'FOR RESEARCH USE ONLY. NOT FOR USE IN DIAGNOSTIC OR THERAPEUTIC PROCEDURES'.