

Anti-HPV-16 (Human Papilloma Virus 16) Antibody

Mouse Monoclonal Antibody

Catalog # AH13686

Product Information

Application	IHC-P, IF
Host	Mouse
Clonality	Monoclonal
Isotype	Mouse / IgG2a, kappa
Clone Names	HPV16/1296

Additional Information

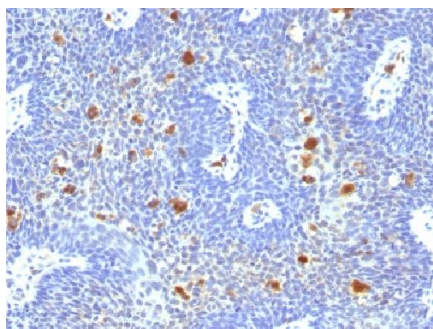
Other Names	HPV-16; HPV-16 capsid; HPV16 L1; HPV16 major capsid protein L1; Human papillomavirus type 16 L1; Human papillomavirus type 16 major capsid protein L1
Application Note	Immunofluorescence (0.5-1ug/ml); ,Immunohistology (Formalin-paraffin) (0.5-1.0ug/ml for 30 minutes at RT),(Staining of formalin-fixed tissues requires boiling tissue sections in 10mM citrate buffer, pH 6.0, for 10-20 min followed by cooling at RT for 20 minutes),Optimal dilution for a specific application should be determined.
Format	200ug/ml of Ab purified from Bioreactor Concentrate by Protein A/G. Prepared in 10mM PBS with 0.05% BSA & 0.05% azide. Also available WITHOUT BSA & azide at 1.0mg/ml.
Storage	Store at 2 to 8°C.Antibody is stable for 24 months.
Precautions	Anti-HPV-16 (Human Papilloma Virus 16) Antibody is for research use only and not for use in diagnostic or therapeutic procedures.

Background

Reacts with E6 protein of human papilloma virus type 16 (HPV-16. Infection with specific types of HPV has been associated with an increased risk of developing cervical neoplasia. HPV types 6 and 11 have been associated with relatively benign diseases such as genital warts but types 16 and 18 are strongly associated with cervical, vaginal, and vulvar malignancies. The antibody reacts very strongly with formalin-fixed, paraffin-embedded tissues containing HPV-16.

Images

Formalin-fixed, paraffin-embedded human Cervix stained with HPV-16 Monoclonal Antibody (HPV16/1296)



Please note: All products are 'FOR RESEARCH USE ONLY. NOT FOR USE IN DIAGNOSTIC OR THERAPEUTIC PROCEDURES'.