

# Bromodeoxyuridine (BrdU) (Proliferation Marker) Antibody - With BSA and Azide

Mouse Monoclonal Antibody [Clone BRD.3 ]

Catalog # AH13039

## Product Information

---

<b>Application</b>	IF, FC, IHC-P
<b>Host</b>	Mouse
<b>Clonality</b>	Monoclonal
<b>Isotype</b>	Mouse / IgG1
<b>Clone Names</b>	BRD.3
<b>Calculated MW</b>	Depends on the target

## Additional Information

---

<b>Application Note</b>	IF~~1:50~200 FC~~1:10~50 IHC-P~~N/A
<b>Storage</b>	Store at 2 to 8°C.Antibody is stable for 24 months.
<b>Precautions</b>	Bromodeoxyuridine (BrdU) (Proliferation Marker) Antibody - With BSA and Azide is for research use only and not for use in diagnostic or therapeutic procedures.

## Background

---

It reacts with Bromodeoxyuridine (BrdU) in single stranded DNA (produced by partial denaturation of double stranded DNA), BrdU coupled to a protein carrier, as well as free BrdU. BrdU is a thymidine analog, incorporated into cell nuclei during DNA synthesis prior to mitosis. Antibody to BrdU is helpful in detecting S-phase cells, providing useful information on the aggressiveness of tumors.

## References

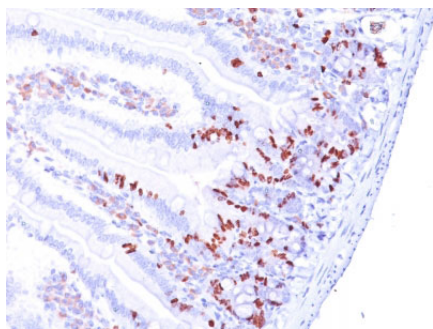
---

Welberg JW et. al. Journal of Clinical Pathology, 1990, 43(6):453-6. | Williams LS et. al. Cytometry, 1990, 11(4):490-7

## Images

---

Formalin-fixed, paraffin-embedded Mouse Small Intestine stained with BrdU Monoclonal Antibody (BRD.3).



Please note: All products are 'FOR RESEARCH USE ONLY. NOT FOR USE IN DIAGNOSTIC OR THERAPEUTIC PROCEDURES'.