

HepPar-1 (Hepatocellular Marker) Antibody - With BSA and Azide

Mouse Monoclonal Antibody [Clone HepPar1]
Catalog # AH13034

Product Information

| | |
|----------------------|--------------|
| Application | IF, IHC-P |
| Reactivity | Human, Dog |
| Host | Mouse |
| Clonality | Monoclonal |
| Isotype | Mouse / IgG1 |
| Clone Names | HepPar1 |
| Calculated MW | Not Known |

Additional Information

| | |
|-------------------------|--|
| Application Note | IF~~1:50~200 IHC-P~~N/A |
| Storage | Store at 2 to 8°C.Antibody is stable for 24 months. |
| Precautions | HepPar-1 (Hepatocellular Marker) Antibody - With BSA and Azide is for research use only and not for use in diagnostic or therapeutic procedures. |

Background

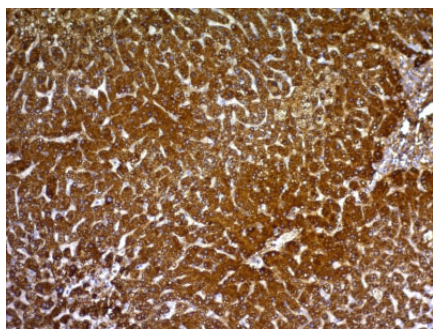
Hepatocyte Paraffin 1 or HepPar1 localizes to the mitochondria of hepatocytes. It is a sensitive marker for distinguishing hepatocellular carcinomas (HCC) from other metastatic carcinomas as well as cholangio-carcinomas. HCC s occur primarily in the stomach, but they are also found in many other organs. The Hepatocyte Specific Antigen may also be a useful marker for intestinal metaplasia. Reportedly, strong expression of the Hepatocyte Specific Antigen correlates with smaller tumor size and longer patient survival. Occasionally, Hepatocyte Specific Antigen is also found in gastric carcinomas as well as in a few other non-hepatic tumors.

References

Wennerberg AE et. al. Am J Pathol 1993;143:1050-4. Ramos-Vara, J.A., et al. Histochem 2002; J. 34: 397-401.Fan, Z., et al. Mod. Pathol 2003; 16: 137-144, 2003

Images

Formalin-fixed, paraffin-embedded human Hepatocellular Carcinoma stained with HepPar-1 Monoclonal Antibody (HepPar1).



Please note: All products are 'FOR RESEARCH USE ONLY. NOT FOR USE IN DIAGNOSTIC OR THERAPEUTIC PROCEDURES'.