

Bromodeoxyuridine (BrdU) (Proliferation Marker) Antibody - With BSA and Azide

Mouse Monoclonal Antibody [Clone MoBu-1]
Catalog # AH13031

Product Information

| | |
|----------------------|-----------------------|
| Application | IF, FC, IHC-P |
| Host | Mouse |
| Clonality | Monoclonal |
| Isotype | Mouse / IgG1 |
| Clone Names | MoBu-1 |
| Calculated MW | Depends on the target |

Additional Information

| | |
|-------------------------|---|
| Application Note | IF~~1:50~200 FC~~1:10~50 IHC-P~~N/A |
| Storage | Store at 2 to 8°C.Antibody is stable for 24 months. |
| Precautions | Bromodeoxyuridine (BrdU) (Proliferation Marker) Antibody - With BSA and Azide is for research use only and not for use in diagnostic or therapeutic procedures. |

Background

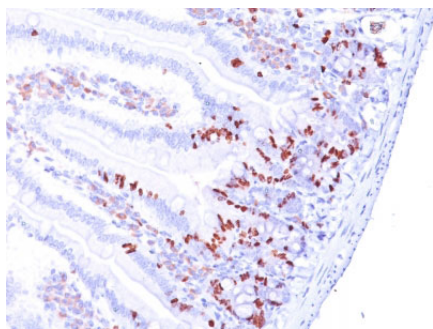
It reacts with Bromodeoxyuridine (BrdU) in single stranded DNA (produced by partial denaturation of double stranded DNA), BrdU coupled to a protein carrier, as well as free BrdU. BrdU is a thymidine analog, incorporated into cell nuclei during DNA synthesis prior to mitosis. Antibody to BrdU is helpful in detecting S-phase cells, providing useful information on the aggressiveness of tumors.

References

Harms et al. Acta Histochemica, Suppl. Band 36, 353-359 (1988). | Arras et al. J Clin Invest. 101(1), 40-50 (1998)

Images

Formalin-fixed, paraffin-embedded Mouse Small Intestine stained with BrdU Monoclonal Antibody (MoBu-1).



Please note: All products are 'FOR RESEARCH USE ONLY. NOT FOR USE IN DIAGNOSTIC OR THERAPEUTIC PROCEDURES'.