

PNL2 (Melanoma Associated Antigen) Antibody - With BSA and Azide

Mouse Monoclonal Antibody [Clone PNL2]

Catalog # AH12892

Product Information

Application	IHC, IF
Reactivity	Human, Mouse, Drosophila
Host	Mouse
Clonality	Monoclonal
Isotype	Mouse / IgG1
Clone Names	PNL2
Calculated MW	160 KDa

Additional Information

Application Note	IHC~~1:100~500 IF~~1:50~200
Storage	Store at 2 to 8°C.Antibody is stable for 24 months.
Precautions	PNL2 (Melanoma Associated Antigen) Antibody - With BSA and Azide is for research use only and not for use in diagnostic or therapeutic procedures.

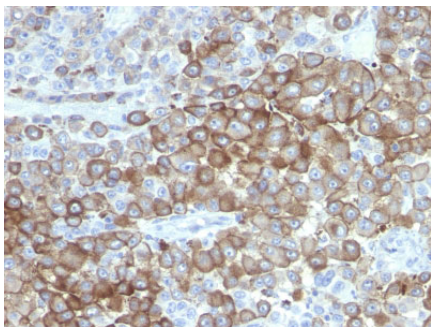
Background

Anti-PNL2 is a novel monoclonal antibody, which has recently been introduced as an immunohistochemical reagent to stain melanocytes and tumors derived therefrom. The antigen recognized by PNL2 is different from Melan A and gp100. Its epitope is not destroyed by digestion with neuraminidase i.e. its epitope is not glycosylated. Anti-PNL2 may be most useful because of its high sensitivity for metastatic melanoma (87%), as opposed to 76% for anti-HMB45 and 82% for anti-MART-1. Anti-PNL2 labels intra-epidermal nevi while the dermal component of compound nevi are largely non-reactive with anti-PNL2. Antibodies against PNL2, MART-1 (Melan A) and HMB45 stain most clear cell sarcoma cells and a few cells in angio-myolipomas and lymphangioleiomyomatosis. Anti-PNL2 is a useful antibody for the identification of melanomas and clear cell sarcomas. Differential diagnosis is aided by the results from a panel of antibodies, including antibodies against HMB45, MART-1, tyrosinase, and MiTF.

References

Rochaix, P et al. PNL2, a New Monoclonal Antibody Directed against a Fixative-Resistant Melanocyte Antigen. *Mod Pathol* 2003;16(5):481-490. | J. A. Ramos-Vara and M. A. Miller. Immunohistochemical Identification of Canine Melanocytic Neoplasms With Antibodies to Melanocytic Antigen PNL2 and Tyrosinase: Comparison With Melan A. *Veterinary Pathology OnlineFirst*, published on September 21, 2010 as doi:10.1177/0300985810382095

Images



Formalin-fixed, paraffin-embedded human Melanoma stained with PNL2 Monoclonal Antibody.

Please note: All products are 'FOR RESEARCH USE ONLY. NOT FOR USE IN DIAGNOSTIC OR THERAPEUTIC PROCEDURES'.