

Testosterone Antibody - With BSA and Azide

Mouse Monoclonal Antibody [Clone 4E1G2]

Catalog # AH12862

Product Information

Application	E
Host	Mouse
Clonality	Monoclonal
Isotype	Mouse / IgG1, kappa
Clone Names	4E1G2
Calculated MW	288 KDa

Additional Information

Application Note	E~~N/A
Storage	Store at 2 to 8°C.Antibody is stable for 24 months.
Precautions	Testosterone Antibody - With BSA and Azide is for research use only and not for use in diagnostic or therapeutic procedures.

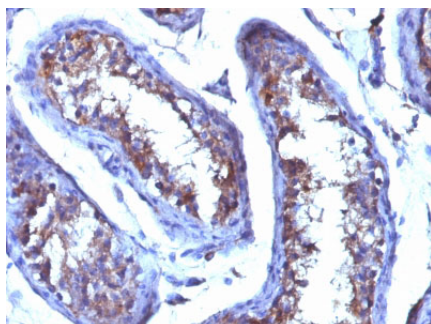
Background

This MAb is highly specific to testosterone. Its affinity constant for testosterone is $\sim 10^{10} \text{M}^{-1}$. In competitive binding immunoassay, it reacts with testosterone 100%, 11-beta-hydroxy testosterone 3.3%, 17-alpha-methyl testosterone

References

Fantl, V.E. and Wang, D.Y. 1983. Characterisation of monoclonal antibodies raised against Testosterone. J. Steroid Biochem. 19: 1605-1610

Images



Formalin-fixed. Paraffin-embedded human Testicular Carcinoma stained with Testosterone Monoclonal Antibody (4E1G2)

Please note: All products are 'FOR RESEARCH USE ONLY. NOT FOR USE IN DIAGNOSTIC OR THERAPEUTIC PROCEDURES'.