

CA19-9 / Sialyl Lewisa (GI Tumor Marker) Antibody - With BSA and Azide

Mouse Monoclonal Antibody [Clone 121SLE]
Catalog # AH12860

Product Information

Application	IHC, IF, FC
Reactivity	Human
Host	Mouse
Clonality	Monoclonal
Isotype	Mouse / IgM, kappa
Clone Names	121SLE
Calculated MW	400 KDa

Additional Information

Application Note	IHC~~1:100~500 IF~~1:50~200 FC~~1:10~50
Storage	Store at 2 to 8°C.Antibody is stable for 24 months.
Precautions	CA19-9 / Sialyl Lewisa (GI Tumor Marker) Antibody - With BSA and Azide is for research use only and not for use in diagnostic or therapeutic procedures.

Background

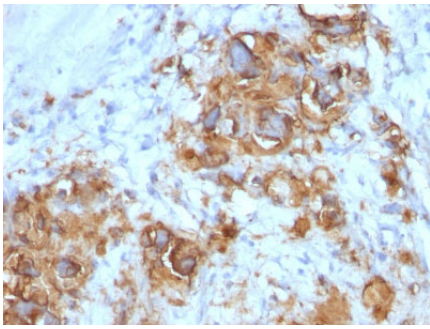
CA19-9, a carbohydrate epitope expressed on a high MW (>400kDa) mucin glycoprotein, is a sialyl Lewisa structure which is synthesized from type 1 blood group precursor chains and is present in individuals expressing the Lewisa and/or Lewisb blood group antigens. In normal tissues, sialyl Lewisa antigen is present in ductal epithelium of the breast, kidney, salivary gland, and sweat glands. Its expression is greatly enhanced in serum as well as in the majority of tumor cells in gastrointestinal (GI) carcinomas, including adenocarcinomas of the stomach, intestine, and pancreas. Preoperative elevated CA19-9 levels in patients with stage I pancreatic carcinoma decrease to normal values following surgery. When used serially, CA19-9 can predict recurrence of disease prior to radiographic or clinical findings. This MAb is excellent for staining of formalin-fixed, paraffin-embedded tissues.

References

Blood transfusion and Immunohaematology, Ph. Rouger, D Anstee and Ch. Salmon (Eds). Arnette, France 30 (5): 353-720 (1987). | Tumor Biol 19(5): 390420, (1998; TD-6 Workshop Report)

Images

Formalin-fixed, paraffin-embedded human Gastric



Carcinoma stained with CA19-9 Monoclonal Antibody (121SLE).

Please note: All products are 'FOR RESEARCH USE ONLY. NOT FOR USE IN DIAGNOSTIC OR THERAPEUTIC PROCEDURES'.