

Involucrin (Squamous Cell Terminal Differentiation Marker) Antibody - With BSA and Azide

Mouse Monoclonal Antibody [Clone IVRN/827]

Catalog # AH11618

Product Information

Application	IHC, IF, FC
Primary Accession	P07476
Other Accession	3713 , 516439
Reactivity	Human
Host	Mouse
Clonality	Monoclonal
Isotype	Mouse / IgG1, kappa
Clone Names	IVRN/827
Calculated MW	68479

Additional Information

Gene ID	3713
Other Names	Involucrin, IVL
Application Note	IHC~~1:100~500 IF~~1:50~200 FC~~1:10~50
Storage	Store at 2 to 8°C.Antibody is stable for 24 months.
Precautions	Involucrin (Squamous Cell Terminal Differentiation Marker) Antibody - With BSA and Azide is for research use only and not for use in diagnostic or therapeutic procedures.

Protein Information

Name	IVL
Function	Part of the insoluble cornified cell envelope (CE) of stratified squamous epithelia.
Cellular Location	Cytoplasm. Note=Constituent of the scaffolding of the cornified envelope
Tissue Location	Keratinocytes of epidermis and other stratified squamous epithelia

Background

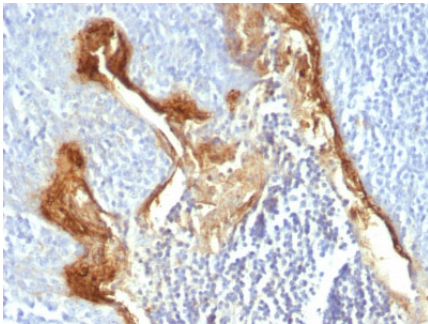
It recognizes a protein of 66kDa-170kDa, identified as involucrin. In Western blotting of cultured human

keratinocytes, this MAb reacts with a 120kDa protein. Involucrin is expressed in a range of stratified squamous epithelia, including the cornea, which lacks a distinct cornified layer. In normal epidermis, it is first expressed in the upper spinous layers, and in keratinocyte cultures, all cells that have left the basal layer express it. Involucrin expression is altered in pathological conditions: in psoriasis and other benign epidermal hyperplasias, involucrin expression begins closer to the basal layer than normal; expression is abnormal in squamous cell carcinomas and premalignant lesions, and is reduced in severe dysplasias of the larynx and cervix.

References

Eckert, R.L. and Green, H. 1986. Structure and evolution of the human involucrin gene. Cell 46: 583-589

Images



Formalin-fixed, paraffin-embedded human Tonsil stained with Involucrin Monoclonal Antibody (IVRN/827)

Please note: All products are 'FOR RESEARCH USE ONLY. NOT FOR USE IN DIAGNOSTIC OR THERAPEUTIC PROCEDURES'.