

HLA-DRB (MHC II) Antibody - With BSA and Azide

Mouse Monoclonal Antibody [Clone LN-3 + HLA-DRB/1067]
Catalog # AH11454

Product Information

| | |
|--------------------------|---|
| Application | WB, IHC, IF, FC |
| Primary Accession | P01911 |
| Other Accession | 3123 , 534322 |
| Reactivity | Human, Monkey |
| Host | Mouse |
| Clonality | Monoclonal |
| Isotype | Mouse / IgG's |
| Clone Names | LN-3 + HLA-DRB/1067 |
| Calculated MW | 28 KDa |

Additional Information

| | |
|-------------------------|--|
| Other Names | HLA class II histocompatibility antigen, DRB1-15 beta chain, DW2.2/DR2.2, MHC class II antigen DRB1*15, HLA-DRB1, HLA-DRB2 |
| Application Note | WB~~1:1000 IHC~~1:100~500 IF~~1:50~200 FC~~1:10~50 |
| Storage | Store at 2 to 8°C. Antibody is stable for 24 months. |
| Precautions | HLA-DRB (MHC II) Antibody - With BSA and Azide is for research use only and not for use in diagnostic or therapeutic procedures. |

Protein Information

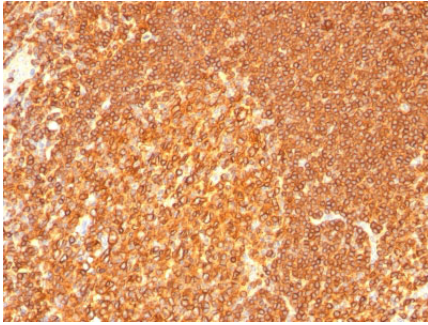
Background

This MAb reacts with the beta-chain of HLA-DRB1 antigen, a member of MHC class II molecules. It does not cross react with HLA-DP and HLA-DQ. HLA-DR is a heterodimeric cell surface glycoprotein comprised of a 36kDa alpha (heavy) chain and a 28kDa beta (light) chain. It is expressed on B-cells, activated T-cells, monocytes/macrophages, dendritic cells and other non-professional APCs. In conjunction with the CD3/TCR complex and CD4 molecules, HLA-DR is critical for efficient peptide presentation to CD4+ T cells. It is an excellent histiocytic marker in paraffin sections producing intense cytoplasmic staining. True histiocytic neoplasms are similarly positive. HLA-DR antigens also occur on a variety of epithelial cells and their corresponding neoplastic counterparts. Loss of HLA-DR expression is related to tumor microenvironment and predicts adverse outcome in diffuse large B-cell lymphoma.

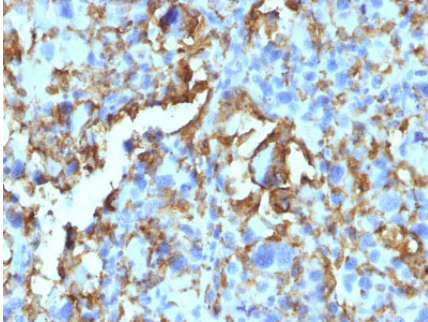
References

Marder RJ, et al. 1985. Lab. Invest. 52:497.2. Norton AJ and Isaacson PG. 1987. Am. J. Pathol. 128:225. |

Images



Formalin-fixed, paraffin-embedded human Tonsil stained with HLA-DRB Monoclonal Antibody (LN-3 + HLA-DRB/1067).



Formalin-fixed, paraffin-embedded human Histiocytoma stained with HLA-DR Monoclonal Antibody (LN-3 + HLA-DRB/1067).

Please note: All products are 'FOR RESEARCH USE ONLY. NOT FOR USE IN DIAGNOSTIC OR THERAPEUTIC PROCEDURES'.