

AMP Deaminase, Isoform E (AMPD3) (Erythroid Marker) Antibody - With BSA and Azide

Mouse Monoclonal Antibody [Clone AMPD3/901]

Catalog # AH11326

Product Information

Application	IF, FC, ICC, IHC-F
Primary Accession	Q01432
Other Accession	272 , 501890
Reactivity	Human
Host	Mouse
Clonality	Monoclonal
Isotype	Mouse / IgG2b, kappa
Clone Names	AMPD3/901
Calculated MW	88812

Additional Information

Gene ID	272
Other Names	AMP deaminase 3, 3.5.4.6, AMP deaminase isoform E, Erythrocyte AMP deaminase, AMPD3
Application Note	IF~~1:50~200 FC~~1:10~50 ICC~~N/A IHC-F~~N/A
Storage	Store at 2 to 8°C.Antibody is stable for 24 months.
Precautions	AMP Deaminase, Isoform E (AMPD3) (Erythroid Marker) Antibody - With BSA and Azide is for research use only and not for use in diagnostic or therapeutic procedures.

Protein Information

Name	AMPD3 (HGNC:470)
Function	AMP deaminase plays a critical role in energy metabolism.

Background

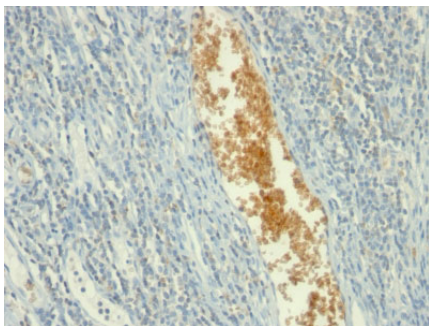
It recognizes a protein of ~90kDa, which is identified as Adenosine Monophosphate Deaminase, isoform E (AMPD3). It has 767 amino acids and is assigned an EC 3.5.4.6. It is a highly regulated enzyme that catalyzes the hydrolytic deamination of adenosine monophosphate to inosine monophosphate, a branch point in the adenylate catabolic pathway. AMPD3 gene encodes the erythrocyte (E) isoforms, whereas other family members encode isoforms that predominate in muscle (M) and liver (L) cells. This MAb shows reactivity with

cells of the erythroid lineage at all stages of maturation in the peripheral blood, bone marrow, and fetal liver. Non-erythroid lineages are negative by flow cytometry. This MAb is useful in the diagnosis of erythroleukemia, identification of bone marrow erythroid precursors, gating erythroid nucleated precursor cells from malignant cells in bone marrow specimens.

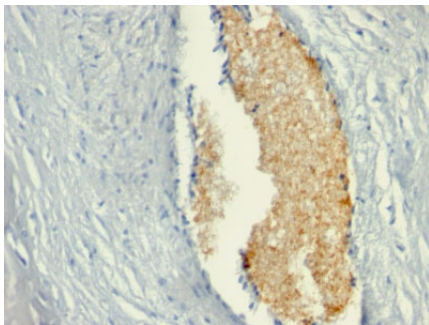
References

Sabina RL, Waldenström A, Ronquist G. The contribution of Ca^{2+} calmodulin activation of human erythrocyte AMP deaminase (isoform E) to the erythrocyte metabolic dysregulation of familial phosphofructokinase deficiency. *Haematologica*. 2006;91(5):652-5

Images



Formalin-fixed, paraffin-embedded human Tonsil stained with AMPD3 Monoclonal Antibody (AMPD3/901)



Formalin-fixed, paraffin-embedded human Placenta stained with AMPD3 Monoclonal Antibody (AMPD3/901)

Please note: All products are 'FOR RESEARCH USE ONLY. NOT FOR USE IN DIAGNOSTIC OR THERAPEUTIC PROCEDURES'.