

# CD15 / FUT4 (Reed-Sternberg Cell Marker) Antibody - With BSA and Azide

Mouse Monoclonal Antibody [Clone FUT4/815 + BRA-4F1 ]  
Catalog # AH11277

## Product Information

---

<b>Application</b>	IHC, IF, FC
<b>Primary Accession</b>	<a href="#">P22083</a>
<b>Other Accession</b>	<a href="#">2526</a> , <a href="#">654379</a>
<b>Reactivity</b>	Human
<b>Host</b>	Mouse
<b>Clonality</b>	Monoclonal
<b>Isotype</b>	Mouse / IgM's
<b>Clone Names</b>	FUT4/815 + BRA-4F1
<b>Calculated MW</b>	220 KDa

## Additional Information

---

<b>Other Names</b>	Alpha-(1, 3)-fucosyltransferase 4, 2.4.1.-, ELAM-1 ligand fucosyltransferase, Fucosyltransferase 4, Fucosyltransferase IV, Fuc-TIV, FucT-IV, Galactoside 3-L-fucosyltransferase, FUT4, ELFT, FCT3A
<b>Application Note</b>	IHC~~1:100~500 IF~~1:50~200 FC~~1:10~50
<b>Storage</b>	Store at 2 to 8°C.Antibody is stable for 24 months.
<b>Precautions</b>	CD15 / FUT4 (Reed-Sternberg Cell Marker) Antibody - With BSA and Azide is for research use only and not for use in diagnostic or therapeutic procedures.

## Protein Information

---

### Background

---

CD15 plays a role in mediating phagocytosis, bactericidal activity, and chemotaxis. It is present on >95% of granulocytes including neutrophils and eosinophils and to a lesser degree on monocytes. In addition, CD15 is expressed in Reed-Sternberg cells and some epithelial cells. CD15 antibody is very useful in the identification of Hodgkin s disease. CD15 is occasionally expressed in large cell lymphomas of both B and T phenotypes which otherwise have a quite distinct histological appearance.

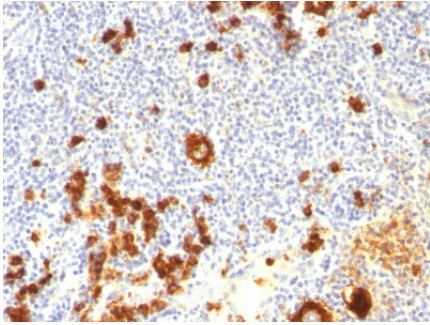
### References

---

Hsu et. al. Amer J Clin Pathol 82: 29, 1984. | Pinkus et. al. Am J Pathol 119: 244, 1985. |

## Images

---



Formalin-fixed, paraffin-embedded human Hodgkin's Lymphoma stained with CD15 Monoclonal Antibody (FUT4/815 + BRA-4F1).

Please note: All products are 'FOR RESEARCH USE ONLY. NOT FOR USE IN DIAGNOSTIC OR THERAPEUTIC PROCEDURES'.