

# Alkaline Phosphatase (Placental) / PLAP (Germ Cell Tumor Marker) Antibody - With BSA and Azide

Mouse Monoclonal Antibody [Clone PL8-F6 ]

Catalog # AH11263

## Product Information

---

Application	IF, FC, IHC-F
Primary Accession	<a href="#">P05187</a>
Other Accession	<a href="#">250</a> , <a href="#">284255</a>
Reactivity	Human
Host	Mouse
Clonality	Monoclonal
Isotype	Mouse / IgG2b, kappa
Clone Names	PL8-F6
Calculated MW	57954

## Additional Information

---

Gene ID	250
Other Names	Alkaline phosphatase, placental type, 3.1.3.1, Alkaline phosphatase Regan isozyme, Placental alkaline phosphatase 1, PLAP-1, ALPP, PLAP
Application Note	IF~~1:50~200 FC~~1:10~50 IHC-F~~N/A
Storage	Store at 2 to 8°C.Antibody is stable for 24 months.
Precautions	Alkaline Phosphatase (Placental) / PLAP (Germ Cell Tumor Marker) Antibody - With BSA and Azide is for research use only and not for use in diagnostic or therapeutic procedures.

## Protein Information

---

Name	ALPP ( <a href="#">HGNC:439</a> )
Function	Alkaline phosphatase that can hydrolyze various phosphate compounds.
Cellular Location	Cell membrane; Lipid-anchor, GPI-anchor
Tissue Location	Detected in placenta (at protein level).

## Background

---

Reacts with a 70kDa membrane-bound isozyme (Regan and Nagao type) of Placental Alkaline Phosphatase

(PLAP) occurring in the placenta during the 3rd trimester of gestation. It is highly specific for PLAP and shows no cross-reaction with other isozymes of alkaline phosphatase. Anti-PLAP reacts with germ cell tumors and can discriminate between these and other neoplasms. Somatic neoplasms e.g. breast, gastrointestinal, prostatic, and urinary cancers may also immunoreact with antibodies to PLAP. Anti-PLAP positivity in conjunction with anti-keratin negativity favors seminoma over carcinoma. Germ cell tumors are usually anti-keratin positive, but they regularly fail to stain with anti-EMA, whereas most carcinomas stain with anti-EMA. Anti-PLAP has been useful in the diagnosis of gestational trophoblastic disease. □

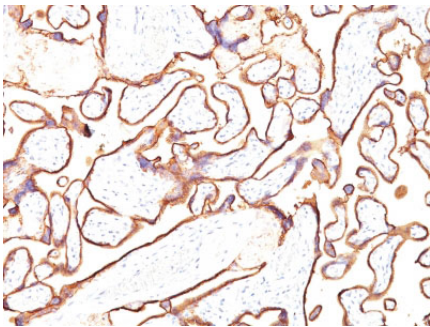
## References

---

Fishman WH, et al. Cancer Res 28:150-154, 1968. | Ho DM, et al. Cancer 70: 1577-1584, 1992. | Loke Y, et al. Int J Cancer 25:459-461, 1980. | Millan JL and Manes T. Proc Natl Acad Sci USA 85: 3024-3028, 1988. |

## Images

---



Formalin-fixed, paraffin-embedded human Placenta stained with PLAP Monoclonal Antibody (PL8-F6).

Please note: All products are 'FOR RESEARCH USE ONLY. NOT FOR USE IN DIAGNOSTIC OR THERAPEUTIC PROCEDURES'.