

# Chromogranin A / CHGA (Neuroendocrine Marker) Antibody - With BSA and Azide

Mouse Monoclonal Antibody [Clone CHGA/798 ]  
Catalog # AH11092

## Product Information

---

<b>Application</b>	IHC, IF, FC
<b>Primary Accession</b>	<a href="#">P10645</a>
<b>Other Accession</b>	<a href="#">1113</a> , <a href="#">150793</a>
<b>Reactivity</b>	Human, Rat
<b>Host</b>	Mouse
<b>Clonality</b>	Monoclonal
<b>Isotype</b>	Mouse / IgG1, kappa
<b>Clone Names</b>	CHGA/798
<b>Calculated MW</b>	50688

## Additional Information

---

<b>Gene ID</b>	1113
<b>Other Names</b>	Chromogranin-A, CgA, Pituitary secretory protein I, SP-I, Vasostatin-1, Vasostatin I, Vasostatin-2, Vasostatin II, EA-92, ES-43, Pancreastatin, SS-18, WA-8, WE-14, LF-19, AL-11, GV-19, GR-44, ER-37, CHGA
<b>Application Note</b>	IHC~~1:100~500 IF~~1:50~200 FC~~1:10~50
<b>Storage</b>	Store at 2 to 8°C. Antibody is stable for 24 months.
<b>Precautions</b>	Chromogranin A / CHGA (Neuroendocrine Marker) Antibody - With BSA and Azide is for research use only and not for use in diagnostic or therapeutic procedures.

## Protein Information

---

<b>Name</b>	CHGA
<b>Function</b>	[Pancreastatin]: Strongly inhibits glucose induced insulin release from the pancreas. [Serpinin]: Regulates granule biogenesis in endocrine cells by up-regulating the transcription of protease nexin 1 (SERPINE2) via a cAMP-PKA-SP1 pathway. This leads to inhibition of granule protein degradation in the Golgi complex which in turn promotes granule formation.
<b>Cellular Location</b>	[Serpinin]: Secreted {ECO:0000250 UniProtKB:P26339}. Cytoplasmic vesicle, secretory vesicle {ECO:0000250 UniProtKB:P26339}. Note=Pyroglutaminated serpinin localizes to secretory vesicle. {ECO:0000250 UniProtKB:P26339}

## Tissue Location

Detected in cerebrospinal fluid (at protein level) (PubMed:25326458).  
Detected in urine (at protein level) (PubMed:37453717).

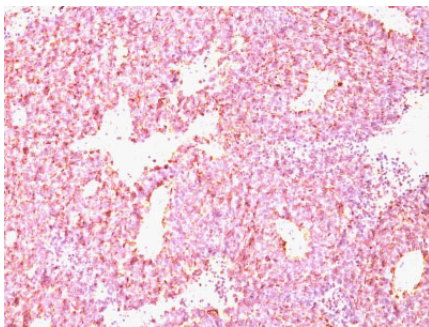
## Background

Chromogranin A is present in neuroendocrine cells throughout the body, including the neuroendocrine cells of the large and small intestine, adrenal medulla and pancreatic islets. It is an excellent marker for carcinoid tumors, pheochromocytomas, paragangliomas, and other neuroendocrine tumors. Co-expression of chromogranin A and neuron specific enolase (NSE) is common in neuroendocrine neoplasms. Reportedly, co-expression of certain keratins and chromogranin indicates neuroendocrine lineage. The presence of strong anti-chromogranin staining and absence of anti-keratin staining should raise the possibility of paraganglioma. The co-expression of chromogranin and NSE is typical of neuroendocrine neoplasms. Most pituitary adenomas and prolactinomas readily express chromogranin.

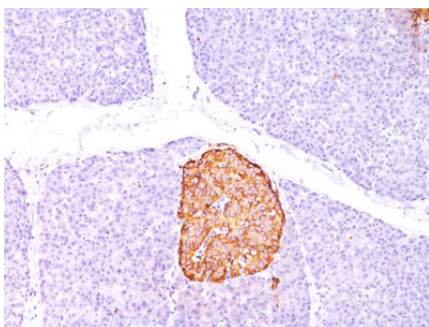
## References

Schmid, K.W., et al. 1993. Chromogranin A, secretogranin II and vasoactive intestinal peptide in pheochromocytomas and ganglioneuromas. *Histopathology* 22: 527-533

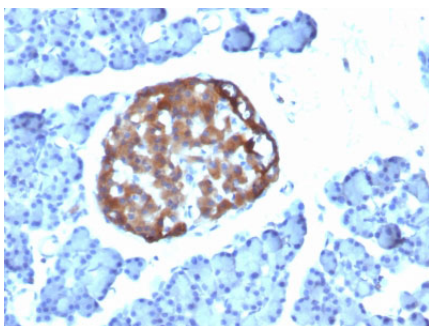
## Images



Formalin-paraffin human SC Lung Carcinoma stained with Chromogranin A MAb (CHGA/798)

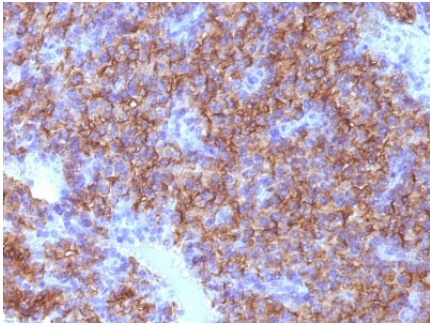


Formalin-paraffin human Pancreas stained with Chromogranin A MAb (CHGA/798)

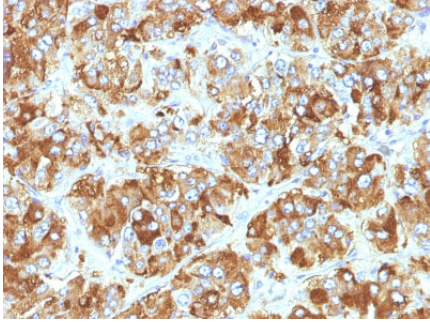


Formalin-paraffin Rat Pancreas stained with Chromogranin A MAb (CHGA/798)

Formalin-fixed, paraffin-embedded human Parathyroid stained with Chromogranin A Monoclonal Antibody



(CHGA/798)



Formalin-fixed, paraffin-embedded human Adrenal Gland stained with Chromogranin A Monoclonal Antibody (CHGA/798)

Please note: All products are 'FOR RESEARCH USE ONLY. NOT FOR USE IN DIAGNOSTIC OR THERAPEUTIC PROCEDURES'.