

Helicobacter Pylori Antibody - With BSA and Azide

Rabbit Polyclonal Antibody
Catalog # AH10979

Product Information

Application	IF, FC, IHC-P
Host	Rabbit
Clonality	Polyclonal
Isotype	Rabbit / IgG
Clone Names	
Calculated MW	Multiple

Additional Information

Application Note	IF~~1:50~200 FC~~1:10~50 IHC-P~~N/A
Format	200ug/ml of Ab purified from rabbit anti-serum by Protein A. Prepared in 10mM PBS with 0.05% BSA & 0.05% azide. Also available WITHOUT BSA at 1.0mg/ml.
Storage	Store at 2 to 8°C. Antibody is stable for 24 months.
Precautions	Helicobacter Pylori Antibody - With BSA and Azide is for research use only and not for use in diagnostic or therapeutic procedures.

Background

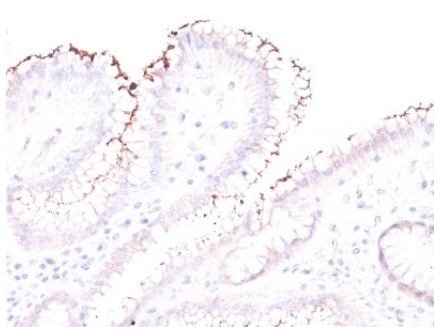
The spiral shaped bacterium *Helicobacter pylori* is strongly associated with inflammation of the stomach and is also implicated in the development of gastric malignancy. *H. pylori* is known to cause peptic ulcers and chronic gastritis in human. It is associated with duodenal ulcers and may be involved in development of adenocarcinoma and low-grade lymphoma of mucosa associated lymphoid tissue in the stomach. This antibody stains the individual *H. pylori* bacterium when it presents on the surface of the epithelium or in the cytoplasm of the epithelial cells in biopsy tissue sections from the antrum and body of the stomach.

References

Fiorentino M et. al. Infect Immun 81:876-883 (2013). Moodley Y et. al. PLoS Pathog 8(5): e1002693. doi:10.1371/journal.ppat.1002693 (2012)

Images

Formalin-fixed, paraffin-embedded human Stomach stained with Helicobacter pylori Rabbit Polyclonal Antibody.



Please note: All products are 'FOR RESEARCH USE ONLY. NOT FOR USE IN DIAGNOSTIC OR THERAPEUTIC PROCEDURES'.