

Myeloid Cell Marker (Macrophage / Granulocyte Marker) Antibody - With BSA and Azide

Mouse Monoclonal Antibody [Clone SPM250]
Catalog # AH10960

Product Information

| | |
|----------------------|---------------|
| Application | IF, FC, IHC-P |
| Reactivity | Human |
| Host | Mouse |
| Clonality | Monoclonal |
| Isotype | Mouse / IgG1 |
| Clone Names | SPM250 |
| Calculated MW | Unknown |

Additional Information

| | |
|-------------------------|--|
| Application Note | IF~~1:50~200 FC~~1:10~50 IHC-P~~N/A |
| Format | 200ug/ml of Ab purified from Bioreactor Concentrate by Protein A/G. Prepared in 10mM PBS with 0.05% BSA & 0.05% azide. Also available WITHOUT BSA & azide at 1.0mg/ml. |
| Storage | Store at 2 to 8°C. Antibody is stable for 24 months. |
| Precautions | Myeloid Cell Marker (Macrophage / Granulocyte Marker) Antibody - With BSA and Azide is for research use only and not for use in diagnostic or therapeutic procedures. |

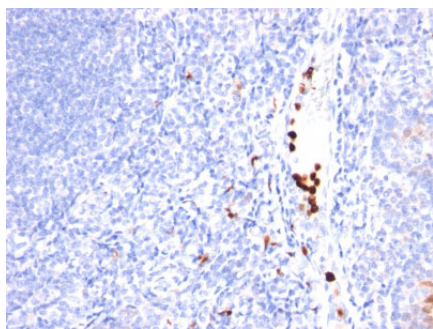
Background

Recognizes an unidentified antigen in the cytoplasm of mature granulocytes. It shows no reactivity with any other cell type in human tissues. Markers of myeloid cells are useful in the identification of different levels of cellular differentiation. MAb BM-2 reacts with early precursor and mature forms of human myeloid cells. This MAb is useful for the detection of myeloid leukemias and granulocytic sarcomas. It can be used as a marker of granulocytes in normal tissues or inflammatory processes.

References

de Swart RL et al. Predominant infection of CD150+ lymphocytes and dendritic cells during measles virus infection of macaques. PLoS Pathog 3:e178 (2007).

Images



Formalin-fixed, paraffin-embedded human Tonsil stained with Granulocyte Monoclonal Antibody (SPM250).

Please note: All products are 'FOR RESEARCH USE ONLY. NOT FOR USE IN DIAGNOSTIC OR THERAPEUTIC PROCEDURES'.