

# Bromodeoxyuridine (BrdU) Antibody - With BSA and Azide

Mouse Monoclonal Antibody [Clone SPM537 ]  
Catalog # AH10958

## Product Information

---

|                      |                       |
|----------------------|-----------------------|
| <b>Application</b>   | IF, FC, IHC-P         |
| <b>Host</b>          | Mouse                 |
| <b>Clonality</b>     | Monoclonal            |
| <b>Isotype</b>       | Mouse / IgG1          |
| <b>Clone Names</b>   | SPM537                |
| <b>Calculated MW</b> | Depends on the target |

## Additional Information

---

|                         |  |
|-------------------------|--|
| <b>Application Note</b> | IF~~1:50~200 FC~~1:10~50 IHC-P~~N/A  |
| <b>Format</b>           | 200ug/ml of Ab purified from Bioreactor Concentrate by Protein A/G. Prepared in 10mM PBS with 0.05% BSA & 0.05% azide. Also available WITHOUT BSA & azide at 1.0mg/ml. |
| <b>Storage</b>          | Store at 2 to 8°C. Antibody is stable for 24 months.   |
| <b>Precautions</b>      | Bromodeoxyuridine (BrdU) Antibody - With BSA and Azide is for research use only and not for use in diagnostic or therapeutic procedures.                               |

## Background

---

It reacts with Bromodeoxyuridine (BrdU) in single stranded DNA (produced by partial denaturation of double stranded DNA), BrdU coupled to a protein carrier, as well as free BrdU. BrdU is a thymidine analog, incorporated into cell nuclei during DNA synthesis prior to mitosis. Antibody to BrdU is helpful in detecting S-phase cells, providing useful information on the aggressiveness of tumors.

## References

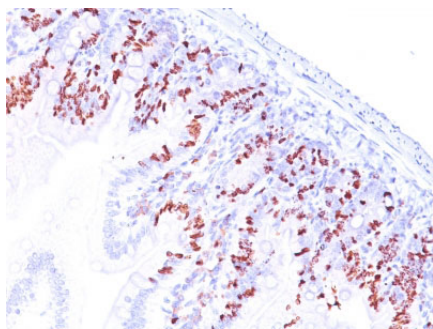
---

Welberg JW et. al. Journal of Clinical Pathology, 1990, 43(6):453-6. | Williams LS et. al. Cytometry, 1990, 11(4):490-7

## Images

---

Formalin-fixed, paraffin-embedded Mouse Small Intestine stained with BrdU Monoclonal Antibody (SPM537).



Please note: All products are 'FOR RESEARCH USE ONLY. NOT FOR USE IN DIAGNOSTIC OR THERAPEUTIC PROCEDURES'.