

# Mitochondria (Marker for Human Cells) Antibody - With BSA and Azide

Mouse Monoclonal Antibody [Clone SPM198 ]  
Catalog # AH10945

## Product Information

---

<b>Application</b>	WB, IF, IHC-P
<b>Reactivity</b>	Human
<b>Host</b>	Mouse
<b>Clonality</b>	Monoclonal
<b>Isotype</b>	Mouse / IgG1, kappa
<b>Clone Names</b>	SPM198
<b>Calculated MW</b>	60 KDa

## Additional Information

---

<b>Application Note</b>	WB~~1:1000 IF~~1:50~200 IHC-P~~N/A
<b>Format</b>	200ug/ml of Ab purified from Bioreactor Concentrate by Protein A/G. Prepared in 10mM PBS with 0.05% BSA & 0.05% azide. Also available WITHOUT BSA at 1.0mg/ml.
<b>Storage</b>	Store at 2 to 8°C. Antibody is stable for 24 months.
<b>Precautions</b>	Mitochondria (Marker for Human Cells) Antibody - With BSA and Azide is for research use only and not for use in diagnostic or therapeutic procedures.

## Background

---

This MAb recognizes a 60kDa antigen associated with the mitochondria in human cells. It can be used to stain mitochondria in cell or tissue preparations and can be used as a mitochondrial marker in subcellular fractions. It produces a spaghetti-like pattern in normal and malignant cells. This antibody is an excellent marker for human cells in xenographic model research. It reacts specifically with human cells, including neurons and embryonic stem cells.

## References

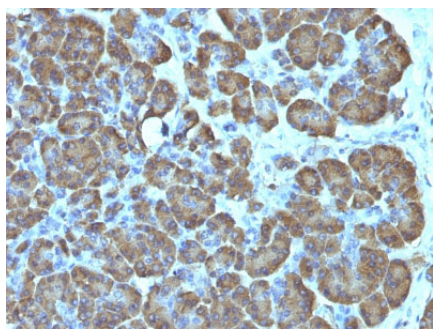
---

Epstein, Alan L. and Clevenger, Charles V. In: Progress in Nonhistone Protein Research, Vol. 1, Isaac Bekhor, Ed. CRC Press, Boca Raton, FL, pp. 117-137, 1985

## Images

---

Formalin-fixed, paraffin-embedded human Pancreas



stained with Mitochondria Monoclonal Antibody (SPM198).

Please note: All products are 'FOR RESEARCH USE ONLY. NOT FOR USE IN DIAGNOSTIC OR THERAPEUTIC PROCEDURES'.