

Myeloid Cell Marker (Macrophage / Granulocyte Marker) Antibody - With BSA and Azide

Mouse Monoclonal Antibody [Clone SPM298]

Catalog # AH10941

Product Information

Application	IF, FC, IHC-P
Reactivity	Human
Host	Mouse
Clonality	Monoclonal
Isotype	Mouse / IgG1
Clone Names	SPM298
Calculated MW	183 KDa

Additional Information

Application Note	IF~~1:50~200 FC~~1:10~50 IHC-P~~N/A
Format	200ug/ml of Ab purified from Bioreactor Concentrate by Protein A/G. Prepared in 10mM PBS with 0.05% BSA & 0.05% azide. Also available WITHOUT BSA & azide at 1.0mg/ml.
Storage	Store at 2 to 8°C. Antibody is stable for 24 months.
Precautions	Myeloid Cell Marker (Macrophage / Granulocyte Marker) Antibody - With BSA and Azide is for research use only and not for use in diagnostic or therapeutic procedures.

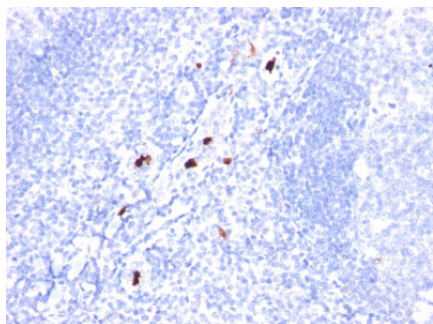
Background

Recognizes 183kDa protein with DNA-binding characteristics, which is identified as a myeloid specific antigen. BM-1 reacts with myeloid precursor cells and granulocytes in bone marrow. Its antigen appears to be restricted to M2 and M3 acute myelogenous leukemia (AML) subtypes. Markers of myeloid cells are useful in the identification of different levels of cellular differentiation. BM-1 and BM-2 antibodies react with early precursor and mature forms of human myeloid cells. BM-1 MAb is useful in the identification of myelogenous leukemias, distinguishing granulocytic sarcomas from lymphoid malignancies and also in the study of differentiation and transformation of human myeloid cells. The biological function of this antigen is not clear, although it has been proposed that BM-1 may play a role in the differentiation of myeloid cells.

References

Epstein AL; Samoszuk M; Stathopoulos E; Naeve GS; Clevenger CV; Weil S; Marder RJ. Immunohistochemical characterization of a 183 KD myeloid-specific-DNA-binding protein in B5 fixed, paraffin-embedded tissues, and bone marrow aspirates by monoclonal antibody BM-1. Blood, 1987, 70(4):1124-30

Images



Formalin-fixed, paraffin-embedded human Tonsil stained with Myeloid specific Monoclonal Antibody (SPM298).

Please note: All products are 'FOR RESEARCH USE ONLY. NOT FOR USE IN DIAGNOSTIC OR THERAPEUTIC PROCEDURES'.