

HPV-16 (Human Papilloma Virus 16) Antibody - With BSA and Azide

Mouse Monoclonal Antibody [Clone SPM257]
Catalog # AH10939

Product Information

Application	IF, IHC-P
Host	Mouse
Clonality	Monoclonal
Isotype	Mouse / IgG2a, kappa
Clone Names	SPM257
Calculated MW	57 KDa

Additional Information

Application Note	IF~~1:50~200 IHC-P~~N/A
Format	200ug/ml of Ab purified from Bioreactor Concentrate by Protein A/G. Prepared in 10mM PBS with 0.05% BSA & 0.05% azide. Also available WITHOUT BSA & azide at 1.0mg/ml.
Storage	Store at 2 to 8°C. Antibody is stable for 24 months.
Precautions	HPV-16 (Human Papilloma Virus 16) Antibody - With BSA and Azide is for research use only and not for use in diagnostic or therapeutic procedures.

Background

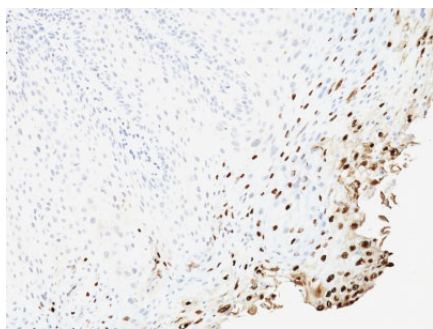
Reacts with a protein of 57kDa, identified as the L1 protein of human papilloma virus type 16 (HPV-16). It is the major capsid protein of HPV-16. Infection with specific types of HPV has been associated with an increased risk of developing cervical neoplasia. HPV types 6 and 11 have been associated with relatively benign diseases such as genital warts but types 16 and 18 are strongly associated with cervical, vaginal, and vulvar malignancies. The antibody reacts very strongly with formalin-fixed, paraffin-embedded tissues containing HPV-16 or -33; very weak reactions were occasionally observed with biopsy specimens or smears containing HPV-6 or HPV-11. It cross-reacts with HPV37.

References

McLean CS, J Clin Pathol, 1990; 43:488-492. |

Images

Formalin-fixed, paraffin-embedded human Cervix stained



with HPV-16 Monoclonal Antibody (SPM257)

Please note: All products are 'FOR RESEARCH USE ONLY. NOT FOR USE IN DIAGNOSTIC OR THERAPEUTIC PROCEDURES'.