

Bromodeoxyuridine (BrdU) Antibody - With BSA and Azide

Mouse Monoclonal Antibody [Clone SPM166]
Catalog # AH10935

Product Information

Application	IF, FC, IHC-P
Host	Mouse
Clonality	Monoclonal
Isotype	Mouse / IgG1
Clone Names	SPM166
Calculated MW	307 KDa

Additional Information

Application Note	IF~~1:50~200 FC~~1:10~50 IHC-P~~N/A
Format	200ug/ml of Ab purified from Bioreactor Concentrate by Protein A/G. Prepared in 10mM PBS with 0.05% BSA & 0.05% azide. Also available WITHOUT BSA & azide at 1.0mg/ml.
Storage	Store at 2 to 8°C.Antibody is stable for 24 months.
Precautions	Bromodeoxyuridine (BrdU) Antibody - With BSA and Azide is for research use only and not for use in diagnostic or therapeutic procedures.

Background

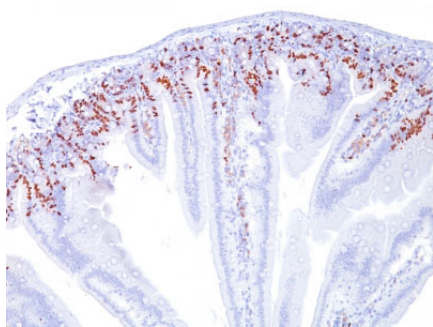
It reacts with Bromodeoxyuridine (BrdU) in single stranded DNA (produced by partial denaturation of double stranded DNA), BrdU coupled to a protein carrier, as well as free BrdU. BrdU is a thymidine analog, incorporated into cell nuclei during DNA synthesis prior to mitosis. Antibody to BrdU is helpful in detecting S-phase cells, providing useful information on the aggressiveness of tumors.

References

Welberg JW et. al. Journal of Clinical Pathology, 1990, 43(6):453-6. | Williams LS et. al. Cytometry, 1990, 11(4):490-7

Images

Formalin-fixed, paraffin-embedded mouse Intestine stained with BrdU Monoclonal Antibody (SPM166).



Please note: All products are 'FOR RESEARCH USE ONLY. NOT FOR USE IN DIAGNOSTIC OR THERAPEUTIC PROCEDURES'.