

# Goat anti-Connective Tissue Growth Factor Antibody

Peptide-affinity purified goat antibody

Catalog # AF4496a

## Product Information

---

<b>Application</b>	IF, Pep-ELISA
<b>Primary Accession</b>	<a href="#">P29279</a>
<b>Other Accession</b>	<a href="#">NP_001892</a>
<b>Reactivity</b>	Human, Mouse, Rat, Dog
<b>Host</b>	Goat
<b>Clonality</b>	Polyclonal
<b>Clone Names</b>	CCN2
<b>Calculated MW</b>	38091

## Additional Information

---

<b>Gene ID</b>	1490
<b>Other Names</b>	CTGF; CCN2; NOV2; IGFBP8; connective tissue growth factor
<b>Dilution</b>	IF~~1:50~200 Pep-ELISA~~N/A
<b>Format</b>	Supplied at 0.5 mg/ml in Tris saline, 0.02% sodium azide, pH7.3 with 0.5% bovine serum albumin. Aliquot and store at -20°C. Minimize freezing and thawing.
<b>Storage</b>	Maintain refrigerated at 2-8°C for up to 6 months. For long term storage store at -20°C in small aliquots to prevent freeze-thaw cycles.
<b>Precautions</b>	Goat anti-Connective Tissue Growth Factor Antibody is for research use only and not for use in diagnostic or therapeutic procedures.

## Protein Information

---

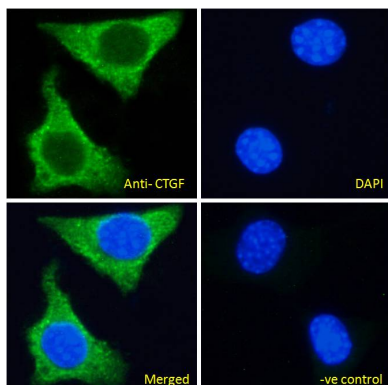
<b>Name</b>	CCN2 ( <a href="#">HGNC:2500</a> )
<b>Function</b>	Major connective tissue mitogen secreted by vascular endothelial cells. Promotes proliferation and differentiation of chondrocytes. Is involved in the stimulation of osteoblast differentiation and has a critical role in osteogenesis (PubMed: <a href="#">39414788</a> ). Mediates heparin- and divalent cation-dependent cell adhesion in many cell types including fibroblasts, myofibroblasts, endothelial and epithelial cells. Enhances fibroblast growth factor- induced DNA synthesis.
<b>Cellular Location</b>	Secreted, extracellular space, extracellular matrix {ECO:0000250 UniProtKB:P29268}. Secreted

## Tissue Location

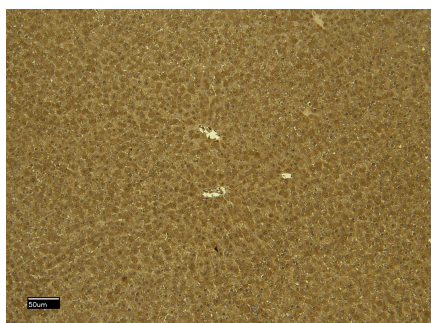
Expressed in bone marrow and thymic cells. Also expressed one of two Wilms tumors tested.

## Images

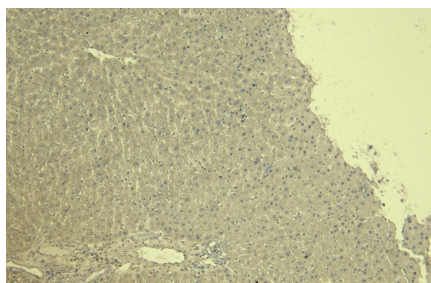
---



EB06683 Immunofluorescence analysis of paraformaldehyde fixed NIH3T3 cells, permeabilized with 0.15% Triton. Primary incubation 1hr (5ug/ml) followed by Alexa Fluor 488 secondary antibody (2ug/ml), showing cytoplasmic staining. The nuclear stain is DAPI (blue). Negative control: Unimmunized goat IgG (5ug/ml) followed by Alexa Fluor 488 secondary antibody (2ug/ml).



EB06683 (6µg/ml) staining of paraffin embedded Rat Liver. Heat induced antigen retrieval with citrate buffer pH 6, HRP-staining.



EB06683 Negative Control showing staining of paraffin embedded Rat Liver, with no primary antibody.

Please note: All products are 'FOR RESEARCH USE ONLY. NOT FOR USE IN DIAGNOSTIC OR THERAPEUTIC PROCEDURES'.