

Goat Anti-Endophilin-A1 / SH3GL2 Antibody (internal region), Biotinylated

Catalog # AF4294a

Product Information

Application	WB, E
Primary Accession	Q99962
Other Accession	NP_003017.1 , 6456
Reactivity	Human
Predicted	Human, Pig
Host	Goat
Isotype	IgG
Calculated MW	39962

Additional Information

Gene ID	6456
Other Names	Endophilin-A1, EEN-B1, Endophilin-1, SH3 domain protein 2A, SH3 domain-containing GRB2-like protein 2, SH3GL2, CNSA2, SH3D2A
Dilution	WB~~1:1000 E~~N/A
Storage	Maintain refrigerated at 2-8°C for up to 6 months. For long term storage store at -20°C in small aliquots to prevent freeze-thaw cycles.
Precautions	Goat Anti-Endophilin-A1 / SH3GL2 Antibody (internal region), Biotinylated is for research use only and not for use in diagnostic or therapeutic procedures.

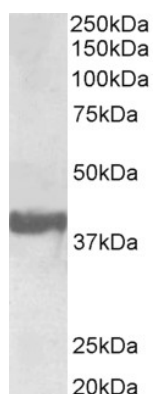
Protein Information

Name	SH3GL2
Synonyms	CNSA2, SH3D2A
Function	Implicated in synaptic vesicle endocytosis. May recruit other proteins to membranes with high curvature. Required for BDNF-dependent dendrite outgrowth. Cooperates with SH3GL2 to mediate BDNF-NTRK2 early endocytic trafficking and signaling from early endosomes.
Cellular Location	Cytoplasm {ECO:0000250 UniProtKB:O35179}. Membrane {ECO:0000250 UniProtKB:O35179}; Peripheral membrane protein {ECO:0000250 UniProtKB:O35179}. Early endosome {ECO:0000250 UniProtKB:Q62420}. Presynapse {ECO:0000250 UniProtKB:O35179}

Tissue Location

Brain, mostly in frontal cortex. Expressed at high level in fetal cerebellum

Images



Biotinylated AF4294a (0.3 µg/ml) staining of Human Frontal Cortex lysate (35 µg protein in RIPA buffer). Primary incubation was 1 hour. Detected by chemiluminescence.

Please note: All products are 'FOR RESEARCH USE ONLY. NOT FOR USE IN DIAGNOSTIC OR THERAPEUTIC PROCEDURES'.