

Cytokeratin 20, Biotinylated

Peptide-affinity purified goat antibody

Catalog # AF3856b

Product Information

Application	WB, Pep-ELISA
Primary Accession	P35900
Other Accession	NP_061883.1 , 54474
Reactivity	Human
Host	Goat
Clonality	Polyclonal
Isotype	IgG
Calculated MW	48487

Additional Information

Gene ID	54474
Other Names	Keratin, type I cytoskeletal 20, Cytokeratin-20, CK-20, Keratin-20, K20, Protein IT, KRT20
Dilution	WB~~1:1000 Pep-ELISA~~N/A
Format	0.5 mg/ml in Tris saline, 0.02% sodium azide, pH7.3 with 0.5% bovine serum albumin
Storage	Maintain refrigerated at 2-8°C for up to 6 months. For long term storage store at -20°C in small aliquots to prevent freeze-thaw cycles.
Precautions	Cytokeratin 20, Biotinylated is for research use only and not for use in diagnostic or therapeutic procedures.

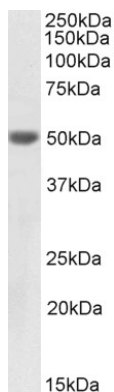
Protein Information

Name	KRT20
Function	Plays a significant role in maintaining keratin filament organization in intestinal epithelia. When phosphorylated, plays a role in the secretion of mucin in the small intestine (By similarity).
Cellular Location	Cytoplasm
Tissue Location	Expressed predominantly in the intestinal epithelium. Expressed in luminal cells of colonic mucosa. Also expressed in the Merkel cells of keratinized oral mucosa; specifically at the tips of some rete ridges of the gingival mucosa, in the basal layer of the palatal mucosa and in the taste buds of lingual mucosa

References

SATB2 in combination with cytokeratin 20 identifies over 95% of all colorectal carcinomas. Magnusson K, de Wit M, Brennan DJ, Johnson LB, McGee SF, Lundberg E, Naicker K, Klinger R, Kampf C, Asplund A, Wester K, Gry M, Bjartell A, Gallagher WM, Rexhepaj E, Kilpinen S, Kallioniemi OP, Belt E, Goos J, Meijer G, Birgisson H, Glimelius B, Borrebaeck AM J Surg Pathol. 2011 Jul;35(7):937-48. PMID: 21677534

Images



Biotinylated EB11745 (1 µg/ml) staining of Human Colon lysate (35 µg protein in RIPA buffer), exactly mirroring its parental non-biotinylated product. Primary incubation was 1 hour. Detected by chemiluminescence, using streptavidin-HRP and using NAP blocker

Please note: All products are 'FOR RESEARCH USE ONLY. NOT FOR USE IN DIAGNOSTIC OR THERAPEUTIC PROCEDURES'.