

PIT-1

Rabbit Monoclonal antibody(Mab)
Catalog # AD80587

Product Information

| | |
|--------------------------|------------------------|
| Application | IHC-P |
| Primary Accession | P28069 |
| Reactivity | Human |
| Host | Rabbit |
| Clonality | Monoclonal |
| Clone Names | 917I2A5 |
| Calculated MW | 32912 |

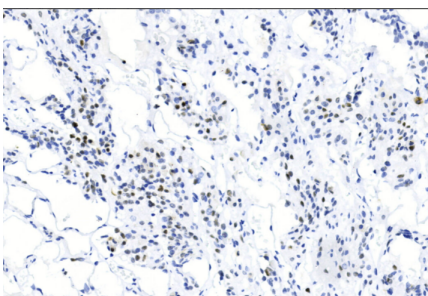
Additional Information

| | |
|--------------------|---|
| Gene ID | 5449 |
| Other Names | Pituitary-specific positive transcription factor 1, PIT-1, Growth hormone factor 1, GHF-1, POU1F1, GHF1, PIT1 |
| Dilution | IHC-P~~N/A |
| Storage | Maintain refrigerated at 2-8°C. |

Protein Information

| | |
|--------------------------|--|
| Name | POU1F1 |
| Synonyms | GHF1, PIT1 |
| Function | Transcription factor involved in the specification of the lactotrope, somatotrope, and thyrotrope phenotypes in the developing anterior pituitary. Specifically binds to the consensus sequence 5'- TAAAT-3'. Activates growth hormone and prolactin genes (PubMed: 22010633 , PubMed: 26612202). |
| Cellular Location | Nucleus. |

Images



人的垂体瘤

Please note: All products are 'FOR RESEARCH USE ONLY. NOT FOR USE IN DIAGNOSTIC OR THERAPEUTIC PROCEDURES'.