

# NSE

Mouse Monoclonal antibody(Mab)  
Catalog # AD80550

## Product Information

---

Application	IHC-P
Primary Accession	<a href="#">P09104</a>
Reactivity	Human
Host	Mouse
Clonality	Monoclonal
Clone Names	536G8D1
Calculated MW	47269

## Additional Information

---

Gene ID	2026
Other Names	Gamma-enolase, 4.2.1.11, 2-phospho-D-glycerate hydro-lyase, Enolase 2, Neural enolase, Neuron-specific enolase, NSE, ENO2
Dilution	IHC-P~~Ready-to-use
Storage	Maintain refrigerated at 2-8°C.

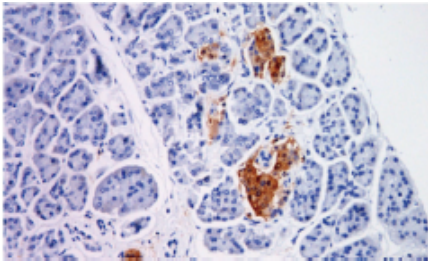
## Protein Information

---

Name	ENO2 ( <a href="#">HGNC:3353</a> )
Function	Enolase that catalyzes the conversion of 2-phosphoglycerate to phosphoenolpyruvate in glycolysis and the reverse reaction in gluconeogenesis (By similarity). Has neurotrophic and neuroprotective properties on a broad spectrum of central nervous system (CNS) neurons. Binds, in a calcium-dependent manner, to cultured neocortical neurons and promotes cell survival (By similarity).
Cellular Location	Cytoplasm. Cell membrane. Note=Can translocate to the plasma membrane in either the homodimeric (alpha/alpha) or heterodimeric (alpha/gamma) form
Tissue Location	The alpha/alpha homodimer is expressed in embryo and in most adult tissues. The alpha/beta heterodimer and the beta/beta homodimer are found in striated muscle, and the alpha/gamma heterodimer and the gamma/gamma homodimer in neurons

## Images

---



Please note: All products are 'FOR RESEARCH USE ONLY. NOT FOR USE IN DIAGNOSTIC OR THERAPEUTIC PROCEDURES'.