

CD11b

Rabbit Monoclonal antibody(Mab)

Catalog # AD80462

Product Information

Application	IHC-P
Primary Accession	P11215
Reactivity	Human
Host	Rabbit
Clonality	Monoclonal
Clone Names	263B4D2
Calculated MW	127179

Additional Information

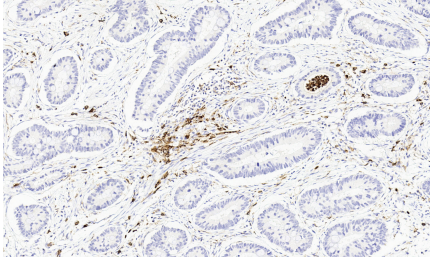
Gene ID	3684
Gene Name	FOXA1
Other Names	Integrin alpha-M, CD11 antigen-like family member B, CR-3 alpha chain, Cell surface glycoprotein MAC-1 subunit alpha, Leukocyte adhesion receptor MO1, Neutrophil adherence receptor, CD11b, ITGAM, CD11B, CR3A
Dilution	IHC-P~~Ready-to-use
Storage	Maintain refrigerated at 2-8°C.
Precautions	FOX A1 Antibody is for research use only and not for use in diagnostic or therapeutic procedures.

Protein Information

Name	ITGAM (HGNC:6149)
Synonyms	CD11B, CR3A
Function	Integrin ITGAM/ITGB2 is implicated in various adhesive interactions of monocytes, macrophages and granulocytes as well as in mediating the uptake of complement-coated particles and pathogens (PubMed: 20008295 , PubMed: 9558116). It is identical with CR-3, the receptor for the iC3b fragment of the third complement component. It probably recognizes the R-G-D peptide in C3b. Integrin ITGAM/ITGB2 is also a receptor for fibrinogen and factor X. It recognizes P1 and P2 peptides of fibrinogen gamma chain. Regulates neutrophil migration (PubMed: 28807980). In association with beta subunit ITGB2/CD18, required for CD177-PRTN3-mediated activation of TNF primed neutrophils (PubMed: 21193407). Integrin ITGAM/ITGB2 is also a receptor for ICAM1 ligand ensuring adhesion between stimulated neutrophils and stimulated endothelial cells (PubMed: 1980124). May regulate phagocytosis-induced apoptosis in extravasated neutrophils (By similarity). May play a role in mast cell development (By similarity). Required with

	TYROBP/DAP12 in microglia to control production of microglial superoxide ions which promote the neuronal apoptosis that occurs during brain development (By similarity).
Cellular Location	Cell membrane; Single-pass type I membrane protein. Membrane raft; Single-pass type I membrane protein
Tissue Location	Predominantly expressed in monocytes and granulocytes (PubMed:1346576). Expressed in neutrophils (at protein level) (PubMed:21193407).

Images



结肠癌

Please note: All products are 'FOR RESEARCH USE ONLY. NOT FOR USE IN DIAGNOSTIC OR THERAPEUTIC PROCEDURES'.