

CD25

Rabbit Monoclonal antibody(Mab)
Catalog # AD80456

Product Information

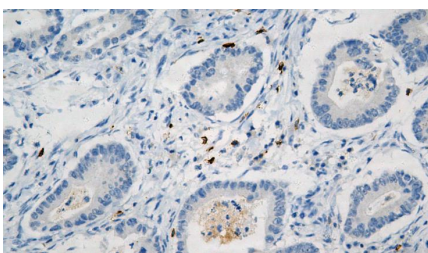
Application	IHC-P
Primary Accession	P01589
Reactivity	Human
Host	Rabbit
Clonality	Monoclonal
Clone Names	666G5A1

Additional Information

Other Names	Interleukin-2 receptor subunit alpha, IL-2 receptor subunit alpha, IL-2-RA, IL-2R subunit alpha, IL2-RA, TAC antigen, p55, CD25, IL2RA
Dilution	IHC-P~~Ready-to-use
Storage	Maintain refrigerated at 2-8°C.

Protein Information

Images



胃腺癌

Please note: All products are 'FOR RESEARCH USE ONLY. NOT FOR USE IN DIAGNOSTIC OR THERAPEUTIC PROCEDURES'.