

## CD35

Rabbit Monoclonal antibody(Mab)

Catalog # AD80421

### Product Information

---

Application	IHC-P
Primary Accession	<a href="#">P17927</a>
Reactivity	Human
Host	Rabbit
Clonality	Monoclonal
Clone Names	463M9T2
Calculated MW	223663

### Additional Information

---

Gene ID	1378
Gene Name	CR1
Other Names	Complement receptor type 1, C3b/C4b receptor, CD35, CR1, C3BR
Dilution	IHC-P~~Ready-to-use
Storage	Maintain refrigerated at 2-8°C.
Precautions	CD35 Antibody is for research use only and not for use in diagnostic or therapeutic procedures.

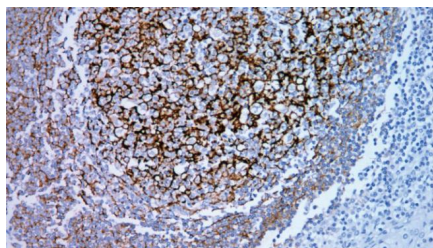
### Protein Information

---

Name	CR1
Synonyms	C3BR
Function	Membrane immune adherence receptor that plays a critical role in the capture and clearance of complement-opsonized pathogens by erythrocytes and monocytes/macrophages (PubMed: <a href="#">2963069</a> ). Mediates the binding by these cells of particles and immune complexes that have activated complement to eliminate them from the circulation (PubMed: <a href="#">2963069</a> ). Also acts in the inhibition of spontaneous complement activation by impairing the formation and function of the alternative and classical pathway C3/C5 convertases, and by serving as a cofactor for the cleavage by factor I of C3b to iC3b, C3c and C3d,g, and of C4b to C4c and C4d (PubMed: <a href="#">2972794</a> , PubMed: <a href="#">8175757</a> ). Also plays a role in immune regulation by contributing, upon ligand binding, to the generation of regulatory T cells from activated helper T cells (PubMed: <a href="#">25742728</a> ).
Cellular Location	Membrane; Single-pass type I membrane protein
Tissue Location	Present on erythrocytes, a subset of T cells, mature B cells, follicular dendritic cells, monocytes and granulocytes

## Images

---



扁桃体

Please note: All products are 'FOR RESEARCH USE ONLY. NOT FOR USE IN DIAGNOSTIC OR THERAPEUTIC PROCEDURES'.