

Kappa链

Rabbit Monoclonal antibody(Mab)

Catalog # AD80357

Product Information

Application	IHC-P
Primary Accession	P01834
Reactivity	Human
Host	Rabbit
Clonality	Monoclonal
Clone Names	655G3A3
Calculated MW	11765

Additional Information

Gene Name	IGKC {ECO:0000303 PubMed:11549845, ECO:0000303 Ref.13}
Other Names	Immunoglobulin kappa constant {ECO:0000303 PubMed:11549845, ECO:0000303 Ref.13}, Ig kappa chain C region, Ig kappa chain C region AG, Ig kappa chain C region CUM, Ig kappa chain C region EU, Ig kappa chain C region OU, Ig kappa chain C region ROY {ECO:0000305 Ref.3}, Ig kappa chain C region TI, IGKC {ECO:0000303 PubMed:11549845, ECO:0000303 Ref.13}
Dilution	IHC-P~~Ready-to-use
Storage	Maintain refrigerated at 2-8°C.
Precautions	Kappa Antibody is for research use only and not for use in diagnostic or therapeutic procedures.

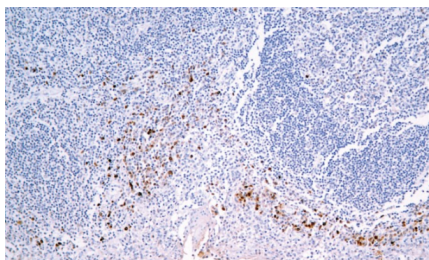
Protein Information

Name	IGKC {ECO:0000303 PubMed:11549845, ECO:0000303 Ref.13}
Function	Constant region of immunoglobulin light chains. Immunoglobulins, also known as antibodies, are membrane-bound or secreted glycoproteins produced by B lymphocytes. In the recognition phase of humoral immunity, the membrane-bound immunoglobulins serve as receptors which, upon binding of a specific antigen, trigger the clonal expansion and differentiation of B lymphocytes into immunoglobulins-secreting plasma cells. Secreted immunoglobulins mediate the effector phase of humoral immunity, which results in the elimination of bound antigens (PubMed: 20176268 , PubMed: 22158414). The antigen binding site is formed by the variable domain of one heavy chain, together with that of its associated light chain. Thus, each immunoglobulin has two antigen binding sites with remarkable affinity for a particular antigen. The variable domains are assembled by a process called V-(D)-J rearrangement and can then be subjected to somatic hypermutations which, after exposure to antigen and selection, allow affinity

Cellular Location

maturation for a particular antigen (PubMed:[17576170](#), PubMed:[20176268](#)).
Secreted. Cell membrane

Images



扁桃体

Please note: All products are 'FOR RESEARCH USE ONLY. NOT FOR USE IN DIAGNOSTIC OR THERAPEUTIC PROCEDURES'.