

# CK18

Rabbit Monoclonal antibody(Mab)  
Catalog # AD80354

## Product Information

---

<b>Application</b>	IHC-P
<b>Primary Accession</b>	<a href="#">P05783</a>
<b>Reactivity</b>	Human
<b>Host</b>	Rabbit
<b>Clonality</b>	Monoclonal
<b>Clone Names</b>	541G2S3
<b>Calculated MW</b>	48058

## Additional Information

---

<b>Gene ID</b>	3875
<b>Gene Name</b>	KRT18
<b>Other Names</b>	Keratin, type I cytoskeletal 18, Cell proliferation-inducing gene 46 protein, Cytokeratin-18, CK-18, Keratin-18, K18, KRT18, CYK18
<b>Dilution</b>	IHC-P~~Ready-to-use
<b>Storage</b>	Maintain refrigerated at 2-8°C.
<b>Precautions</b>	CK18 Antibody is for research use only and not for use in diagnostic or therapeutic procedures.

## Protein Information

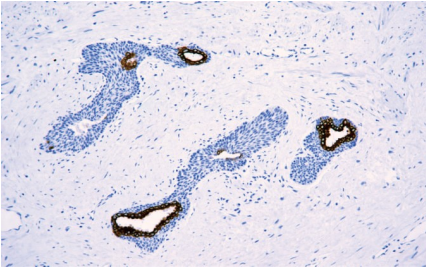
---

<b>Name</b>	KRT18 ( <a href="#">HGNC:6430</a> )
<b>Synonyms</b>	CYK18
<b>Function</b>	Required for the formation of KRT8/KRT18 filaments that are involved in ARHGGEF40-mediated actin stress fiber formation and tensional force-induced stress fiber formation and reinforcement (PubMed: <a href="#">26823019</a> ). Also acts downstream of ROCK kinase activation as part of a positive feedback mechanism in response to cellular mechanical stress loading (PubMed: <a href="#">26823019</a> ). Organization and orientation of KRT18 filaments are responsible for the properly elongated morphology of epithelial tubules (By similarity). Involved in the uptake of thrombin-antithrombin complexes by hepatic cells (By similarity). When phosphorylated, plays a role in filament reorganization. Involved in the delivery of mutated CFTR to the plasma membrane. Together with KRT8, is involved in interleukin-6 (IL-6)- mediated barrier protection.
<b>Cellular Location</b>	Nucleus matrix {ECO:0000250 UniProtKB:Q5BJY9}. Cytoplasm, perinuclear region. Nucleus, nucleolus. Cytoplasm {ECO:0000250 UniProtKB:Q5BJY9}
<b>Tissue Location</b>	Expressed in colon, placenta, liver and very weakly in exocervix. Increased

expression observed in lymph nodes of breast carcinoma.

## Images

---



前列腺癌

Please note: All products are 'FOR RESEARCH USE ONLY. NOT FOR USE IN DIAGNOSTIC OR THERAPEUTIC PROCEDURES'.