

SDHB Antibody

Mouse Monoclonal Antibody (Mab)

Catalog # AD80307

Product Information

Application	IHC
Primary Accession	P21912
Reactivity	Human
Host	Mouse
Clonality	Monoclonal
Clone Names	536E3A3
Calculated MW	31630

Additional Information

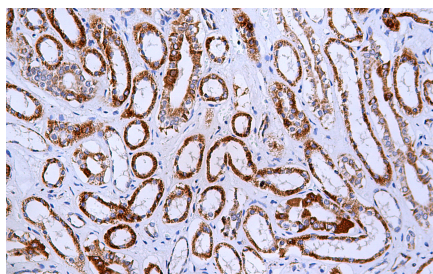
Gene ID	6390
Gene Name	SDHB
Other Names	Succinate dehydrogenase [ubiquinone] iron-sulfur subunit, mitochondrial, 1.3.5.1, Iron-sulfur subunit of complex II, Ip, SDHB, SDH, SDH1
Dilution	IHC~~Ready-to-use
Storage	Maintain refrigerated at 2-8°C.
Precautions	SDHB Antibody is for research use only and not for use in diagnostic or therapeutic procedures.

Protein Information

Name	SDHB
Synonyms	SDH, SDH1
Function	Iron-sulfur protein (IP) subunit of the succinate dehydrogenase complex (mitochondrial respiratory chain complex II), responsible for transferring electrons from succinate to ubiquinone (coenzyme Q) (PubMed: 26925370 , PubMed: 27604842). SDH also oxidizes malate to the non-canonical enol form of oxaloacetate, enol- oxaloacetate (By similarity). Enol-oxaloacetate, which is a potent inhibitor of the succinate dehydrogenase activity, is further isomerized into keto-oxaloacetate (By similarity).
Cellular Location	Mitochondrion inner membrane; Peripheral membrane protein; Matrix side

Images

Immunohistochemical analysis of paraffin-embedded human kidney tissue using AD80271 performed on the Abcarta® FAIP-48 Fully automated IHC platform. Tissue



was fixed with formaldehyde at room temperature, antigen retrieval was by heat mediation with a Citrate buffer (pH6. 0).Samples were incubated with primary antibody(Ready-to-use) for 15 min at room temperature. AmpSee™ Detection Systems(Abcepta:ADR005) was used as the secondary antibody.

Please note: All products are 'FOR RESEARCH USE ONLY. NOT FOR USE IN DIAGNOSTIC OR THERAPEUTIC PROCEDURES'.