

# Inhibin, alpha

Mouse Monoclonal antibody(Mab)

Catalog # AD80296

## Product Information

---

Application	IHC-P
Primary Accession	<a href="#">P05111</a>
Reactivity	Human
Host	Mouse
Clonality	Monoclonal
Clone Names	124A2B2
Calculated MW	39670

## Additional Information

---

Gene ID	3623
Gene Name	INHA
Other Names	Inhibin alpha chain, INHA
Dilution	IHC-P~~Ready-to-use
Storage	Maintain refrigerated at 2-8°C.
Precautions	Inhibin, alpha Antibody is for research use only and not for use in diagnostic or therapeutic procedures.

## Protein Information

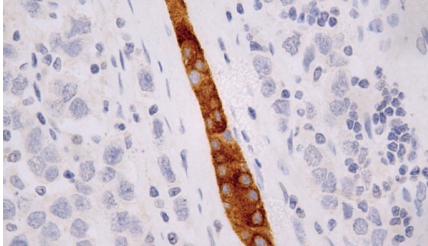
---

Name	INHA
Function	<p>Inhibins and activins inhibit and activate, respectively, the secretion of follitropin by the pituitary gland. Inhibins/activins are involved in regulating a number of diverse functions such as hypothalamic and pituitary hormone secretion, gonadal hormone secretion, germ cell development and maturation, erythroid differentiation, insulin secretion, nerve cell survival, embryonic axial development or bone growth, depending on their subunit composition. Inhibins appear to oppose the functions of activins. Inhibin B is a dimer of alpha and beta-B that plays a crucial role in the regulation of the reproductive system by inhibiting the secretion of follicle-stimulating hormone (FSH) from the anterior pituitary gland. Thereby, maintains reproductive homeostasis in both males and females. Acts as a more potent suppressor of FSH release than inhibin A (By similarity). Functions as competitive receptor antagonist binding activin type II receptors with high affinity in the presence of the TGF-beta type III coreceptor/TGFBR3L (PubMed:<a href="#">34910520</a>).</p>
Cellular Location	Secreted {ECO:0000250 UniProtKB:P17490}.
Tissue Location	Originally found in ovary (granulosa cells) and testis (Sertoli cells), but widely

distributed in many tissues including brain and placenta. In adrenal cortex expression is limited to the zona reticularis and the innermost zona fasciculata in the normal gland, extending centripetally into the zona fasciculata in hyperplasia. Also found in adrenocortical tumors. Also expressed in prostate epithelium of benign prostatic hyperplasia, in regions of basal cell hyperplasia and in nonmalignant regions of high grade prostate cancer. Only circulating inhibin B is found in male, whereas circulating inhibins A and B are found in female

## Images

---



精原细胞瘤

Please note: All products are 'FOR RESEARCH USE ONLY. NOT FOR USE IN DIAGNOSTIC OR THERAPEUTIC PROCEDURES'.