

Calretinin

Rabbit Monoclonal antibody(Mab)
Catalog # AD80262

Product Information

| | |
|-------------------|------------------------|
| Application | IHC-P |
| Primary Accession | P22676 |
| Reactivity | Human |
| Host | Rabbit |
| Clonality | Monoclonal |
| Clone Names | 554J1B8 |
| Calculated MW | 31540 |

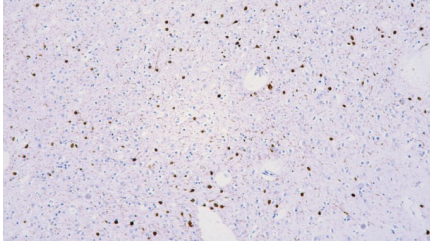
Additional Information

| | |
|-------------|---|
| Gene ID | 794 |
| Gene Name | CALB2 |
| Other Names | Calretinin, CR, 29 kDa calbindin, CALB2, CAB29 |
| Dilution | IHC-P~~Ready-to-use |
| Storage | Maintain refrigerated at 2-8°C. |
| Precautions | Calretinin Antibody is for research use only and not for use in diagnostic or therapeutic procedures. |

Protein Information

| | |
|-------------------|--|
| Name | CALB2 (HGNC:1435) |
| Synonyms | CAB29 |
| Function | Calcium-binding protein involved in calcium homeostasis and signal transduction. It plays a critical role in buffering intracellular calcium levels and modulating calcium-dependent signaling pathways (PubMed: 2001709). Predominantly expressed in specific neuronal populations, influences synaptic plasticity and neuronal excitability, contributing to learning and memory (By similarity). During embryonic development, it facilitates neuronal differentiation and maturation (By similarity). |
| Cellular Location | Synapse {ECO:0000250 UniProtKB:Q08331}. Cell projection, dendrite {ECO:0000250 UniProtKB:Q08331}. Note=Located in dendrioles, small dendrites that makes up a brush structure found as the terminal specialization of a dendrite of a unipolar brush cell {ECO:0000250 UniProtKB:Q08331} |
| Tissue Location | Brain. |

Images



脑组织

Please note: All products are 'FOR RESEARCH USE ONLY. NOT FOR USE IN DIAGNOSTIC OR THERAPEUTIC PROCEDURES'.