

CD20抗体试剂(免疫组织化学)

Mouse Monoclonal Antibody (Mab)

Catalog # AD80206

Product Information

Application	IHC
Primary Accession	P11836
Reactivity	Human
Host	Mouse
Clonality	Monoclonal
Clone Names	356D7B4
Calculated MW	33077

Additional Information

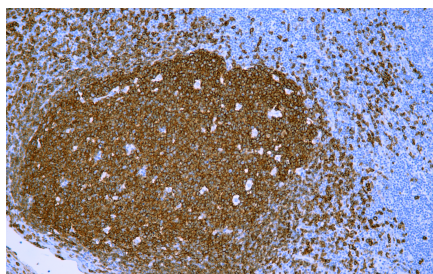
Gene ID	931
Gene Name	MS4A1
Other Names	B-lymphocyte antigen CD20, B-lymphocyte surface antigen B1, Bp35, Leukocyte surface antigen Leu-16, Membrane-spanning 4-domains subfamily A member 1, CD20, MS4A1, CD20
Dilution	IHC~~Ready-to-use
Storage	Maintain refrigerated at 2-8°C.
Precautions	CD20 Antibody is for research use only and not for use in diagnostic or therapeutic procedures.

Protein Information

Name	MS4A1
Synonyms	CD20
Function	B-lymphocyte-specific membrane protein that plays a role in the regulation of cellular calcium influx necessary for the development, differentiation, and activation of B-lymphocytes (PubMed: 12920111 , PubMed: 3925015 , PubMed: 7684739). Functions as a store-operated calcium (SOC) channel component promoting calcium influx after activation by the B-cell receptor/BCR (PubMed: 12920111 , PubMed: 18474602 , PubMed: 7684739).
Cellular Location	Cell membrane; Multi-pass membrane protein. Cell membrane; Lipid-anchor. Note=Constitutively associated with membrane rafts.
Tissue Location	Expressed on B-cells.

Images

Immunohistochemical analysis of paraffin-embedded



human tonsil tissue using AD80206 performed on the Abcarta® FAIP-48 Fully automated IHC platform. Tissue was fixed with formaldehyde at room temperature, antigen retrieval was by heat mediation with a Citrate buffer (pH 6.0). Samples were incubated with primary antibody (Ready-to-use) for 15 min at room temperature. AmpSee™ Detection Systems (Abcepta: ADR005) was used as the secondary antibody.

Please note: All products are 'FOR RESEARCH USE ONLY. NOT FOR USE IN DIAGNOSTIC OR THERAPEUTIC PROCEDURES'.