

# FSH

Mouse Monoclonal antibody(Mab)  
Catalog # AD80165

## Product Information

---

<b>Application</b>	IHC-P
<b>Primary Accession</b>	<a href="#">P23945</a>
<b>Reactivity</b>	Human
<b>Host</b>	Mouse
<b>Clonality</b>	Monoclonal
<b>Clone Names</b>	265F3G3

## Additional Information

---

<b>Gene ID</b>	2492
<b>Gene Name</b>	FSHR
<b>Other Names</b>	Follicle-stimulating hormone receptor, FSH-R, Follitropin receptor, FSHR, LGR1
<b>Dilution</b>	IHC-P~~Ready-to-use
<b>Storage</b>	Maintain refrigerated at 2-8°C.
<b>Precautions</b>	FSH Antibody is for research use only and not for use in diagnostic or therapeutic procedures.

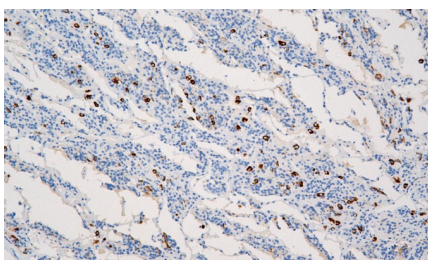
## Protein Information

---

<b>Synonyms</b>	LGR1
<b>Function</b>	G protein-coupled receptor for follitropin, the follicle-stimulating hormone (PubMed: <a href="#">11847099</a> , PubMed: <a href="#">24058690</a> , PubMed: <a href="#">24692546</a> ). Through cAMP production activates the downstream PI3K-AKT and ERK1/ERK2 signaling pathways (PubMed: <a href="#">24058690</a> ).
<b>Cellular Location</b>	Cell membrane; Multi-pass membrane protein
<b>Tissue Location</b>	Sertoli cells and ovarian granulosa cells.

## Images

---



垂体

Please note: All products are 'FOR RESEARCH USE ONLY. NOT FOR USE IN DIAGNOSTIC OR THERAPEUTIC PROCEDURES'.